

EXTL3 Antibody (N-term)

Affinity Purified Rabbit Polyclonal Antibody (Pab)

Catalog # AP9048a

Product Information

Application	WB, IHC-P, FC, E
Primary Accession	O43909
Reactivity	Human
Host	Rabbit
Clonality	Polyclonal
Isotype	Rabbit IgG
Clone Names	RB23315
Calculated MW	104749
Antigen Region	43-72

Additional Information

Gene ID	2137
Other Names	Exostosin-like 3, EXT-related protein 1, Glucuronyl-galactosyl-proteoglycan 4-alpha-N-acetylglucosaminyltransferase, Hereditary multiple exostoses gene isolog, Multiple exostosis-like protein 3, Putative tumor suppressor protein EXTL3, EXTL3, EXTL1L, EXTR1, KIAA0519
Target/Specificity	This EXTL3 antibody is generated from rabbits immunized with a KLH conjugated synthetic peptide between 43-72 amino acids from the N-terminal region of human EXTL3.
Dilution	WB~~1:1000 IHC-P~~1:100~500 FC~~1:10~50 E~~Use at an assay dependent concentration.
Format	Purified polyclonal antibody supplied in PBS with 0.09% (W/V) sodium azide. This antibody is purified through a protein A column, followed by peptide affinity purification.
Storage	Maintain refrigerated at 2-8°C for up to 2 weeks. For long term storage store at -20°C in small aliquots to prevent freeze-thaw cycles.
Precautions	EXTL3 Antibody (N-term) is for research use only and not for use in diagnostic or therapeutic procedures.

Protein Information

Name	EXTL3 {ECO:0000303 PubMed:28397838, ECO:0000312 HGNC:HGNC:3518}
Function	Glycosyltransferase which regulates the biosynthesis of heparan sulfate (HS)

(PubMed:[28132690](#), PubMed:[28148688](#)). Initiates HS synthesis by transferring the first N-acetyl-alpha-D-glucosamine (alpha-GlcNAc) residue (GlcNAcT-I activity) to the tetrasaccharide linker (GlcA-Gal-Gal-Xyl-)Ser core linker (PubMed:[11390981](#), PubMed:[35676258](#)). May also transfer alpha-GlcNAc residues during HS elongation (GlcNAcT-II activity) (PubMed:[11390981](#), PubMed:[35676258](#)). Lacks glucuronyl transferase II (GlcAT-II) activity (PubMed:[11390981](#), PubMed:[35676258](#)). Important for both skeletal development and hematopoiesis, through the formation of HS proteoglycans (HSPGs) (PubMed:[11390981](#), PubMed:[22727489](#), PubMed:[28132690](#), PubMed:[28148688](#), PubMed:[35676258](#)). Through the synthesis of HS, regulates postnatal pancreatic islet maturation and insulin secretion (By similarity).

Cellular Location Endoplasmic reticulum membrane; Single-pass type II membrane protein. Golgi apparatus. Cell membrane. Nucleus Note=Interaction with REG3A induces its translocation to the nucleus

Tissue Location Ubiquitous. Expressed in keratinocytes. Expressed in pancreas (PubMed:34099862).

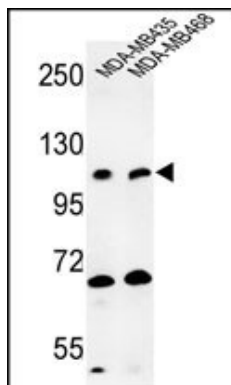
Background

EXTL3 is probable glycosyltransferase.

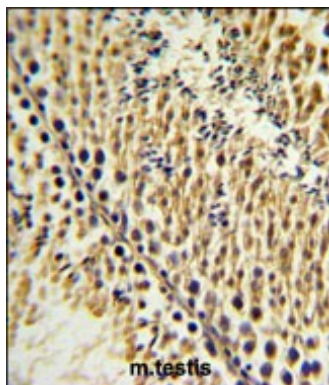
References

Kaidonis,X., et.al., Eur. J. Hum. Genet. 18 (2), 194-199 (2010)
Pata,G., et.al., J Surg Oncol 100 (6), 520-522 (2009)

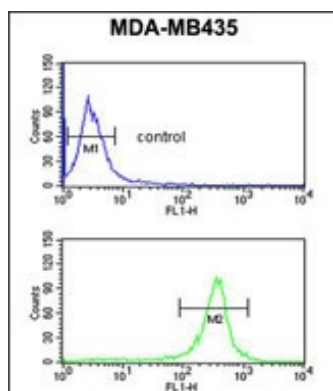
Images



Western blot analysis of EXTL3 Antibody (N-term) (Cat. #AP9048a) in MDA-MB435, MDA-MB468 cell line lysates (35ug/lane). EXTL3 (arrow) was detected using the purified Pab.



EXTL3 Antibody (N-term) (Cat. #AP9048a) IHC analysis in formalin fixed and paraffin embedded testis tissue followed by peroxidase conjugation of the secondary antibody and DAB staining. This data demonstrates the use of the EXTL3 Antibody (N-term) for immunohistochemistry. Clinical relevance has not been evaluated.



EXTL3 Antibody (N-term) (Cat. #AP9048a) flow cytometric analysis of MDA-MB435 cells (bottom histogram) compared to a negative control cell (top histogram). FITC-conjugated goat-anti-rabbit secondary antibodies were used for the analysis.

Please note: All products are 'FOR RESEARCH USE ONLY. NOT FOR USE IN DIAGNOSTIC OR THERAPEUTIC PROCEDURES'.