

p38 MAPK Antibody

Rabbit mAb

Catalog # AP90491

Product Information

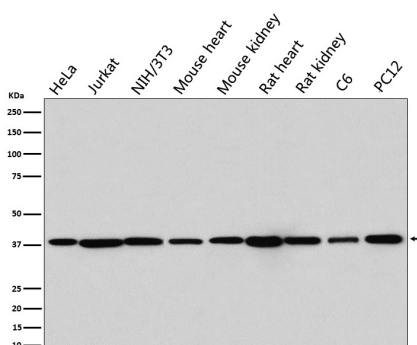
Application	WB, IF, FC, ICC, IP
Primary Accession	Q16539
Reactivity	Rat, Human, Mouse
Clonality	Monoclonal
Other Names	MAPK14; CSBP; CSBP1; CSBP2; CSPB1; MXI2; SAPK2A;EXIP; Mxi2;PRKM14; PRKM15; RK; p38; p38ALPHA;
Isotype	Rabbit IgG
Host	Rabbit
Calculated MW	38 KDa

Additional Information

Dilution	WB 1:500~1:2000 ICC/IF 1:100~1:500 IF 1:100 FC 1:150
Purification	Affinity-chromatography
Immunogen	A synthesized peptide derived from human p38 MAPK
Description	The protein encoded by this gene is a member of the MAP kinase family. MAP kinases act as an integration point for multiple biochemical signals, and are involved in a wide variety of cellular processes such as proliferation, differentiation, transcription regulation and development.
Storage Condition and Buffer	Rabbit IgG in phosphate buffered saline , pH 7.4, 150mM NaCl, 0.02% sodium azide and 50% glycerol. Store at +4°C short term. Store at -20°C long term. Avoid freeze / thaw cycle.

Protein Information

Images



Western blot analysis of p38 MAPK expression in (1) HeLa cell lysate; (2) Jurkat cell lysate; (3) NIH/3T3 cell lysate; (4) Mouse heart lysate; (5) Mouse kidney lysate; (6) Rat heart lysate; (7) Rat kidney lysate; (8) C6 cell lysate; (9) PC12 cell lysate.

Image not found : 202311/AP90491-IF.jpg

Immunofluorescent analysis of Hela cells, using p38
MAPK Antibody.

Please note: All products are 'FOR RESEARCH USE ONLY. NOT FOR USE IN DIAGNOSTIC OR THERAPEUTIC PROCEDURES'.