

Rho A + B + C Antibody

Rabbit mAb

Catalog # AP90500

Product Information

Application	WB, IHC, IF, FC, ICC, IHF
Primary Accession	P61586/P62745/P08134
Reactivity	Rat, Human, Mouse
Clonality	Monoclonal
Other Names	ARH12, ARH6; ARH9; ARHA; ARHA2; H12; RHO12; Transforming protein RhoA; RHOA; RHOB; RHOC;
Isotype	Rabbit IgG
Host	Rabbit
Calculated MW	22 KDa

Additional Information

Dilution	WB 1:500~1:2000 IHC 1:500~1:1000 ICC/IF 1:100~1:500 FC 1:200
Purification	Affinity-chromatography
Immunogen	A synthesized peptide derived from human Rho A + B + C
Description	RhoA , RhoB , RhoC is a small G protein of the Rho family. Regulates a signal transduction pathway linking plasma membrane receptors to the assembly of focal adhesions and actin stress fibers. The three mammalian Rho proteins (A, B and C) are approximately 30% homologous to Ras and are expressed in a wide range of cell types. Both Ras p21 and Rho p21, as well as other members of the Ras superfamily, contain a carboxy terminal CAAX sequence (C, cysteine; A, aliphatic amino acid; X, any amino acid) which in the case of Ras has been shown to be essential for correct localization and function.
Storage Condition and Buffer	Rabbit IgG in phosphate buffered saline , pH 7.4, 150mM NaCl, 0.02% sodium azide and 50% glycerol. Store at +4°C short term. Store at -20°C long term. Avoid freeze / thaw cycle.

Protein Information

Images

Western blot analysis of Rho A + B + C expression in (1) Jurkat cell lysate; (2) NIH/3T3 cell lysate.

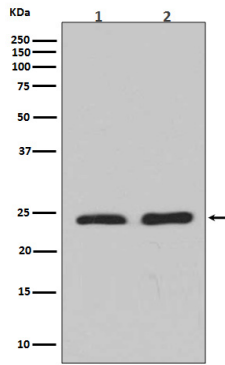


Image not found : 202311/AP90500-IHC.jpg

Immunohistochemical analysis of paraffin-embedded human lung carcinoma, using Rho A + B + C Antibody .

Image not found : 202311/AP90500-IF.jpg

Immunofluorescent analysis of Hela cells, using Rho A + B + C Antibody .

Please note: All products are 'FOR RESEARCH USE ONLY. NOT FOR USE IN DIAGNOSTIC OR THERAPEUTIC PROCEDURES'.