

PI 3 Kinase p55 gamma Antibody

Rabbit mAb

Catalog # AP90508

Product Information

| | |
|--------------------------|---|
| Application | WB, IHC, IF, ICC, IHF |
| Primary Accession | Q92569 |
| Reactivity | Rat, Human, Mouse |
| Clonality | Monoclonal |
| Other Names | GRB1, P85A, PI3-kinase p85-alpha subunit, PI3K, PI3K p85-alpha; P55G, PI3-kinase p85-gamma subunit, PI3K p85-gamma, |
| Isotype | Rabbit IgG |
| Host | Rabbit |
| Calculated MW | 54448 |

Additional Information

| | |
|-------------------------------------|---|
| Dilution | WB 1:500~1:1000 IHC 1:50~1:200 ICC/IF 1:50~1:200 |
| Purification | Affinity-chromatography |
| Immunogen | A synthesized peptide derived from human PI 3 Kinase p55 gamma |
| Description | Binds to activated (phosphorylated) protein-tyrosine kinases through its SH2 domain and regulates their kinase activity. During insulin stimulation, it also binds to IRS-1. Highest levels in brain and testis. Lower levels in adipose tissue, kidney, heart, lung and skeletal muscle. |
| Storage Condition and Buffer | Rabbit IgG in phosphate buffered saline , pH 7.4, 150mM NaCl, 0.02% sodium azide and 50% glycerol. Store at +4°C short term. Store at -20°C long term. Avoid freeze / thaw cycle. |

Protein Information

| | |
|------------------------|--|
| Name | PIK3R3 |
| Function | Binds to activated (phosphorylated) protein-tyrosine kinases through its SH2 domain and regulates their kinase activity. During insulin stimulation, it also binds to IRS-1. |
| Tissue Location | Highest levels in brain and testis. Lower levels in adipose tissue, kidney, heart, lung and skeletal muscle |

Images

Western blot analysis of PI 3 Kinase p55 gamma expression in SH-SY5Y cell lysate.

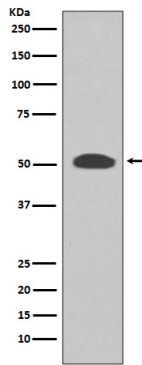


Image not found : 202311/AP90508-IHC.jpg

Immunohistochemical analysis of paraffin-embedded human astrocytoma, using PI 3 Kinase p55 gamma Antibody.

Image not found : 202311/AP90508-IF.jpg

Immunofluorescent analysis of C6 cells, using PI 3 Kinase p55 gamma Antibody .

Please note: All products are 'FOR RESEARCH USE ONLY. NOT FOR USE IN DIAGNOSTIC OR THERAPEUTIC PROCEDURES'.