

# ITGA2 Antibody (C-term)

Affinity Purified Rabbit Polyclonal Antibody (Pab)

Catalog # AP9051b

## Product Information

---

<b>Application</b>	WB, E
<b>Primary Accession</b>	<a href="#">P17301</a>
<b>Reactivity</b>	Human
<b>Host</b>	Rabbit
<b>Clonality</b>	Polyclonal
<b>Isotype</b>	Rabbit IgG
<b>Clone Names</b>	RB23554
<b>Calculated MW</b>	129296
<b>Antigen Region</b>	1023-1049

## Additional Information

---

<b>Gene ID</b>	3673
<b>Other Names</b>	Integrin alpha-2, CD49 antigen-like family member B, Collagen receptor, Platelet membrane glycoprotein Ia, GPIa, VLA-2 subunit alpha, CD49b, ITGA2, CD49B
<b>Target/Specificity</b>	This ITGA2 antibody is generated from rabbits immunized with a KLH conjugated synthetic peptide between 1023-1049 amino acids from the C-terminal region of human ITGA2.
<b>Dilution</b>	WB~~1:1000 E~~Use at an assay dependent concentration.
<b>Format</b>	Purified polyclonal antibody supplied in PBS with 0.09% (W/V) sodium azide. This antibody is purified through a protein A column, followed by peptide affinity purification.
<b>Storage</b>	Maintain refrigerated at 2-8°C for up to 2 weeks. For long term storage store at -20°C in small aliquots to prevent freeze-thaw cycles.
<b>Precautions</b>	ITGA2 Antibody (C-term) is for research use only and not for use in diagnostic or therapeutic procedures.

## Protein Information

---

<b>Name</b>	ITGA2
<b>Synonyms</b>	CD49B
<b>Function</b>	Integrin alpha-2/beta-1 is a receptor for laminin, collagen, collagen

C-propeptides, fibronectin and E-cadherin. It recognizes the proline-hydroxylated sequence G-F-P-G-E-R in collagen. It is responsible for adhesion of platelets and other cells to collagens, modulation of collagen and collagenase gene expression, force generation and organization of newly synthesized extracellular matrix. (Microbial infection) Integrin ITGA2:ITGB1 acts as a receptor for Human echoviruses 1 and 8.

#### Cellular Location

Membrane; Single-pass type I membrane protein.

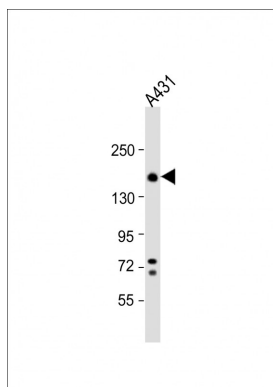
## Background

ITGA2 is a protein that belongs to the integrin alpha chain family. Integrins are heterodimeric integral membrane glycoproteins composed of a distinct alpha chain and a common beta chain. They are found on a wide variety of cell types including, T cells, fibroblasts and platelets. Integrins are involved in cell adhesion and also participate in cell-surface mediated signalling.

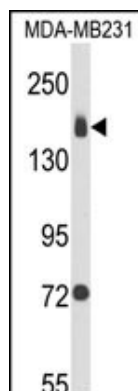
## References

Ye, F., Hu, G., et al., J. Cell Biol. 188 (1), 157-173 (2010)  
Jokinen, J., et al., EMBO J. 29 (1), 196-208 (2010)

## Images



Anti-ITGA2 Antibody (C-term) at 1:1000 dilution + A431 whole cell lysate. Lysates/proteins at 20 µg per lane. Secondary Goat Anti-Rabbit IgG, (H+L), Peroxidase conjugated at 1/10000 dilution. Predicted band size : 129 kDa. Blocking/Dilution buffer: 5% NFDM/TBST.



Western blot analysis of ITGA2 Antibody (C-term) (Cat. #AP9051b) in MDA-MB231 cell line lysates (35 µg/lane). ITGA2 (arrow) was detected using the purified Pab.

Please note: All products are 'FOR RESEARCH USE ONLY. NOT FOR USE IN DIAGNOSTIC OR THERAPEUTIC PROCEDURES'.