

Prohibitin Antibody

Rabbit mAb

Catalog # AP90522

Product Information

Application	WB, IHC, IF, FC, ICC, IP, IHF
Primary Accession	P35232
Reactivity	Rat, Human, Mouse
Clonality	Monoclonal
Other Names	PHB; PHB1; HEL 215; Epididymis secretory sperm binding protein Li 54e;
Isotype	Rabbit IgG
Host	Rabbit
Calculated MW	29804

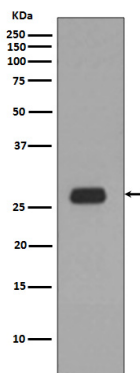
Additional Information

Dilution	WB 1:500~1:2000 IHC 1:50~1:200 ICC/IF 1:50~1:200 IP 1:30 FC 1:30
Purification	Affinity-chromatography
Immunogen	A synthesized peptide derived from human Prohibitin
Description	PHB1 is 30kDa tumor suppressor protein involved in cell cycle control. PHB1 has been found in mitochondria, the nucleus and the plasma membrane, as well as extracellularly in circulation. In mitochondria prohibitins mainly exist as membrane-bound ring complexes and function as chaperones maintaining mitochondrial protein stability during protein synthesis and transportation.
Storage Condition and Buffer	Rabbit IgG in phosphate buffered saline , pH 7.4, 150mM NaCl, 0.02% sodium azide and 50% glycerol. Store at +4°C short term. Store at -20°C long term. Avoid freeze / thaw cycle.

Protein Information

Name	PHB1 {ECO:0000303 PubMed:28017329, ECO:0000312 HGNC:HGNC:8912}
Function	Protein with pleiotropic attributes mediated in a cell- compartment- and tissue-specific manner, which include the plasma membrane-associated cell signaling functions, mitochondrial chaperone, and transcriptional co-regulator of transcription factors in the nucleus (PubMed: 11302691 , PubMed: 20959514 , PubMed: 28017329 , PubMed: 31522117). Plays a role in adipose tissue and glucose homeostasis in a sex-specific manner (By similarity). Contributes to pulmonary vascular remodeling by accelerating proliferation of pulmonary arterial smooth muscle cells (By similarity).
Cellular Location	Mitochondrion inner membrane. Nucleus. Cytoplasm. Cell membrane
Tissue Location	Widely expressed in different tissues.

Images



Western blot analysis of Prohibitin expression in Ramos cell lysate.

Image not found : 202311/AP90522-IHC.jpg

Immunohistochemical analysis of paraffin-embedded human kidney, using Prohibitin Antibody.

Please note: All products are 'FOR RESEARCH USE ONLY. NOT FOR USE IN DIAGNOSTIC OR THERAPEUTIC PROCEDURES'.