

Collagen XVII Antibody

Rabbit mAb

Catalog # AP90524

Product Information

Application	WB, IHC, IF, ICC, IP, IHF
Primary Accession	Q9UMD9
Reactivity	Rat, Human, Mouse
Clonality	Monoclonal
Other Names	BP180; BPA 2; BPAG2; COL17A1; Collagen 17; CollagenXVII; LAD1
Isotype	Rabbit IgG
Host	Rabbit
Calculated MW	150419

Additional Information

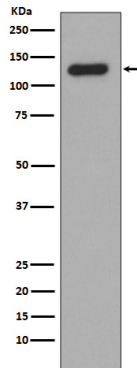
Dilution	WB 1:500~1:2000 IHC 1:50~1:200 ICC/IF 1:50~1:200 IP 1:30
Purification	Affinity-chromatography
Immunogen	A synthesized peptide derived from human Collagen XVII
Description	May play a role in the integrity of hemidesmosome and the attachment of basal keratinocytes to the underlying basement membrane. The 120 kDa linear IgA disease antigen is an anchoring filament component involved in dermal-epidermal cohesion. Is the target of linear IgA bullous dermatosis autoantibodies.
Storage Condition and Buffer	Rabbit IgG in phosphate buffered saline , pH 7.4, 150mM NaCl, 0.02% sodium azide and 50% glycerol. Store at +4°C short term. Store at -20°C long term. Avoid freeze / thaw cycle.

Protein Information

Name	COL17A1
Synonyms	BP180, BPAG2
Function	May play a role in the integrity of hemidesmosome and the attachment of basal keratinocytes to the underlying basement membrane.
Cellular Location	Cell junction, hemidesmosome. Membrane; Single- pass type II membrane protein. Note=Localized along the plasma membrane of the hemidesmosome [97 kDa linear IgA disease antigen]: Secreted, extracellular space, extracellular matrix, basement membrane Note=Localized in the lamina lucida beneath the hemidesmosomes
Tissue Location	Detected in skin (PubMed:8618013). In the cornea, it is detected in the epithelial basement membrane, the epithelial cells, and at a lower level in stromal cells (at protein level) (PubMed:25676728). Stratified squamous

epithelia. Found in hemidesmosomes. Expressed in cornea, oral mucosa, esophagus, intestine, kidney collecting ducts, ureter, bladder, urethra and thymus but is absent in lung, blood vessels, skeletal muscle and nerves

Images



Western blot analysis of Collagen XVII expression in Human skin lysate.

Image not found : 202311/AP90524-IHC.jpg

Immunohistochemical analysis of paraffin-embedded mouse skin, using Collagen XVII Antibody.

Image not found : 202311/AP90524-IF.jpg

Immunofluorescent analysis of A431 cells, using Collagen XVII Antibody .

Please note: All products are 'FOR RESEARCH USE ONLY. NOT FOR USE IN DIAGNOSTIC OR THERAPEUTIC PROCEDURES'.