

Histone H2A.Z Antibody

Rabbit mAb

Catalog # AP90527

Product Information

Application	WB, IHC, IF, ICC, IHF
Primary Accession	P0C0S5
Reactivity	Rat, Human, Mouse
Clonality	Monoclonal
Other Names	HIST1H2AB; Histone H2A type 1-B/E; Histone H2A.2; Histone H2A/a; Histone H2A/m; H2AFM;
Isotype	Rabbit IgG
Host	Rabbit
Calculated MW	13553

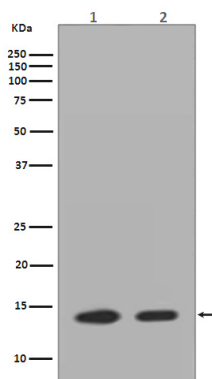
Additional Information

Dilution	WB 1:500~1:2000 IHC 1:50~1:200 ICC/IF 1:50~1:200
Purification	Affinity-chromatography
Immunogen	A synthesized peptide derived from human Histone H2A.Z
Description	Core component of nucleosome. Nucleosomes wrap and compact DNA into chromatin, limiting DNA accessibility to the cellular machineries which require DNA as a template. Histones thereby play a central role in transcription regulation, DNA repair, DNA replication and chromosomal stability. DNA accessibility is regulated via a complex set of post-translational modifications of histones, also called histone code, and nucleosome remodeling.
Storage Condition and Buffer	Rabbit IgG in phosphate buffered saline , pH 7.4, 150mM NaCl, 0.02% sodium azide and 50% glycerol. Store at +4°C short term. Store at -20°C long term. Avoid freeze / thaw cycle.

Protein Information

Name	H2AZ1 (HGNC:4741)
Function	Variant histone H2A which replaces conventional H2A in a subset of nucleosomes. Nucleosomes wrap and compact DNA into chromatin, limiting DNA accessibility to the cellular machineries which require DNA as a template. Histones thereby play a central role in transcription regulation, DNA repair, DNA replication and chromosomal stability. DNA accessibility is regulated via a complex set of post- translational modifications of histones, also called histone code, and nucleosome remodeling. May be involved in the formation of constitutive heterochromatin. May be required for chromosome segregation during cell division.
Cellular Location	Nucleus. Chromosome.

Images



Western blot analysis of Histone H2A.Z expression in (1)Neuro-2a cell lysate;(2)HeLa cell lysate.

Image not found : 202311/AP90527-IHC.jpg

Immunohistochemical analysis of paraffin-embedded human kidney, using Histone H2A.Z Antibody.

Please note: All products are 'FOR RESEARCH USE ONLY. NOT FOR USE IN DIAGNOSTIC OR THERAPEUTIC PROCEDURES'.