

Alas1 Antibody

Rabbit mAb

Catalog # AP90528

Product Information

Application	WB, IF, ICC
Primary Accession	P13196
Reactivity	Human
Clonality	Monoclonal
Other Names	ALAS1; ALAS-H; 5-aminolevulinic acid synthase 1; Delta-ALA synthase 1; ALAS3; ALASH;
Isotype	Rabbit IgG
Host	Rabbit
Calculated MW	70581

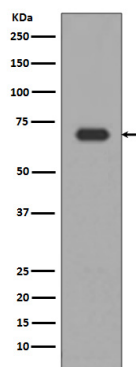
Additional Information

Dilution	WB 1:500~1:2000 ICC/IF 1:50~1:200
Purification	Affinity-chromatography
Immunogen	A synthesized peptide derived from human Alas1
Description	5-aminolevulinate synthase 1 (ALAS-H) and 2 (ALAS-E) are two isoforms of ALAS, an enzyme catalyzing the first step of the heme biosynthetic pathway in mammals. The erythroid-specific isoenzyme, ALAS-E, regulates the first step of hematopoietic cell differentiation and iron metabolism in the liver. ALAS-H is a housekeeping protein which mediates synthesis of early heme in the mitochondria of most cells.
Storage Condition and Buffer	Rabbit IgG in phosphate buffered saline , pH 7.4, 150mM NaCl, 0.02% sodium azide and 50% glycerol. Store at +4°C short term. Store at -20°C long term. Avoid freeze / thaw cycle.

Protein Information

Name	ALAS1
Synonyms	ALAS3, ALASH
Function	Catalyzes the pyridoxal 5'-phosphate (PLP)-dependent condensation of succinyl-CoA and glycine to form aminolevulinic acid (ALA), with CoA and CO ₂ as by-products.
Cellular Location	Mitochondrion inner membrane {ECO:0000250 UniProtKB:P22557}; Peripheral membrane protein {ECO:0000250 UniProtKB:P22557}. Note=Localizes to the matrix side of the mitochondrion inner membrane. {ECO:0000250 UniProtKB:P22557}

Images



Western blot analysis of Alas1 expression in HepG2 cell lysate.

Please note: All products are 'FOR RESEARCH USE ONLY. NOT FOR USE IN DIAGNOSTIC OR THERAPEUTIC PROCEDURES'.