

TOMM20 Antibody

Rabbit mAb

Catalog # AP90530

Product Information

Application	WB, IHC, IF, FC, ICC, IHF
Primary Accession	Q15388
Reactivity	Rat, Human, Mouse
Clonality	Monoclonal
Other Names	Mitochondrial import receptor subunit TOM20 homolog; Outer mitochondrial membrane receptor Tom20;
Isotype	Rabbit IgG
Host	Rabbit
Calculated MW	16 kDa

Additional Information

Dilution	WB 1:500~1:2000 IHC 1:50~1:200 ICC/IF 1:50~1:200 FC 1:100
Purification	Affinity-chromatography
Immunogen	A synthesized peptide derived from human TOMM20
Description	Central component of the receptor complex responsible for the recognition and translocation of cytosolically synthesized mitochondrial preproteins. Together with TOM22 functions as the transit peptide receptor at the surface of the mitochondrion outer membrane and facilitates the movement of preproteins into the TOM40 translocation pore.
Storage Condition and Buffer	Rabbit IgG in phosphate buffered saline , pH 7.4, 150mM NaCl, 0.02% sodium azide and 50% glycerol. Store at +4°C short term. Store at -20°C long term. Avoid freeze / thaw cycle.

Protein Information

Images

Western blot analysis of TOMM20 expression in HepG2 cell lysate.

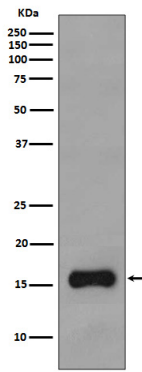


Image not found : 202311/AP90530-IHC.jpg

Immunohistochemical analysis of paraffin-embedded human colon, using TOMM20 Antibody.

Image not found : 202311/AP90530-IF.jpg

Immunofluorescent analysis of Hela cells, using TOMM20 Antibody .

Please note: All products are 'FOR RESEARCH USE ONLY. NOT FOR USE IN DIAGNOSTIC OR THERAPEUTIC PROCEDURES'.