

MAP1LC3A Antibody

Rabbit mAb

Catalog # AP90531

Product Information

Application	WB, IHC, IF, FC, ICC, IP, IHF
Primary Accession	Q9H492
Reactivity	Rat, Human, Mouse
Clonality	Monoclonal
Other Names	MAP1LC3;LC3;LC3A;MAP1ALC3;MAP1BLC3 ;MAP1LC3A;
Isotype	Rabbit IgG
Host	Rabbit
Calculated MW	14272

Additional Information

Dilution	WB 1:500~1:2000 IHC 1:50~1:200 ICC/IF 1:50~1:200 IP 1:50
Purification	Affinity-chromatography
Immunogen	A synthesized peptide derived from human MAP1LC3A
Description	Autophagy marker Light Chain 3 (LC3) was originally identified as a subunit of microtubule-associated proteins 1A and 1B (termed MAP1LC3), and subsequently found to contain similarity to the yeast protein Apg8/Aut7/Cvt5 critical for autophagy. Three human LC3 isoforms (LC3A, LC3B, and LC3C) undergo post-translational modifications during autophagy. Cleavage of LC3 at the carboxy terminus immediately following synthesis yields the cytosolic LC3-I form.
Storage Condition and Buffer	Rabbit IgG in phosphate buffered saline , pH 7.4, 150mM NaCl, 0.02% sodium azide and 50% glycerol. Store at +4°C short term. Store at -20°C long term. Avoid freeze / thaw cycle.

Protein Information

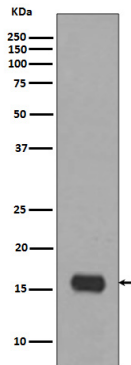
Name	MAP1LC3A
Function	Ubiquitin-like modifier involved in formation of autophagosomal vacuoles (autophagosomes) (PubMed: 20713600 , PubMed: 24290141). While LC3s are involved in elongation of the phagophore membrane, the GABARAP/GATE-16 subfamily is essential for a later stage in autophagosome maturation (PubMed: 20713600). Through its interaction with the reticulophagy receptor TEX264, participates in the remodeling of subdomains of the endoplasmic reticulum into autophagosomes upon nutrient stress, which then fuse with lysosomes for endoplasmic reticulum turnover (PubMed: 31006537 , PubMed: 31006538).
Cellular Location	Cytoplasmic vesicle, autophagosome membrane; Lipid-anchor. Endomembrane system; Lipid-anchor. Cytoplasm, cytoskeleton

{ECO:0000250|UniProtKB:Q91VR7}. Note=LC3-II binds to the autophagic membranes.

Tissue Location

Most abundant in heart, brain, liver, skeletal muscle and testis but absent in thymus and peripheral blood leukocytes

Images



Western blot analysis of MAP1LC3A expression in HeLa cell lysate.

Image not found : 202311/AP90531-IHC.jpg

Immunohistochemical analysis of paraffin-embedded human stomach, using MAP1LC3A Antibody.

Image not found : 202311/AP90531-IF.jpg

Immunofluorescent analysis of HeLa cells, using MAP1LC3A Antibody .

Please note: All products are 'FOR RESEARCH USE ONLY. NOT FOR USE IN DIAGNOSTIC OR THERAPEUTIC PROCEDURES'.