

Cyclin B1 Antibody

Rabbit mAb

Catalog # AP90534

Product Information

Application	WB, IHC, IF, FC, ICC, IHF
Primary Accession	P14635
Reactivity	Human, Mouse
Clonality	Monoclonal
Other Names	CCN-2; CCNB; CCNB1; CCNB1-RS1; CYCB; CYCB1; G2/mitotic-specific cyclin B1;
Isotype	Rabbit IgG
Host	Rabbit
Calculated MW	48337

Additional Information

Dilution	WB 1:500~1:2000 IHC 1:50~1:200 ICC/IF 1:50~1:200 FC 1:100
Purification	Affinity-chromatography
Immunogen	A synthesized peptide derived from human Cyclin B1
Description	Cyclins are a family of proteins that activate specific cyclin-dependent kinases required for progression through the cell cycle. The entry of all eukaryotic cells into mitosis is regulated by activation of cdc2/cdk1 at the G2/M transition. This activation is a multi-step process that begins with the binding of the regulatory subunit, cyclin B1, to cdc2/cdk1 to form the mitosis-promoting factor (MPF).
Storage Condition and Buffer	Rabbit IgG in phosphate buffered saline , pH 7.4, 150mM NaCl, 0.02% sodium azide and 50% glycerol. Store at +4°C short term. Store at -20°C long term. Avoid freeze / thaw cycle.

Protein Information

Name	CCNB1
Synonyms	CCNB
Function	Essential for the control of the cell cycle at the G2/M (mitosis) transition.
Cellular Location	Cytoplasm. Nucleus. Cytoplasm, cytoskeleton, microtubule organizing center, centrosome

Images

Western blot analysis of Cyclin B1 expression in HeLa cell lysate.

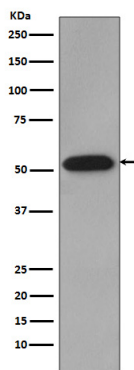


Image not found : 202311/AP90534-IHC.jpg

Immunohistochemical analysis of paraffin-embedded human colon cancer, using Cyclin B1 Antibody.

Image not found : 202311/AP90534-IF.jpg

Immunofluorescent analysis of Hela cells, using Cyclin B1 Antibody .

Please note: All products are 'FOR RESEARCH USE ONLY. NOT FOR USE IN DIAGNOSTIC OR THERAPEUTIC PROCEDURES'.