

# Phospho-c-Myc (S62) Antibody

Rabbit mAb

Catalog # AP90540

## Product Information

<b>Application</b>	WB, IHC, IF, ICC, IP, IHF
<b>Primary Accession</b>	<a href="#">P01106</a>
<b>Reactivity</b>	Rat, Human, Mouse
<b>Clonality</b>	Monoclonal
<b>Other Names</b>	Myc proto-oncogene protein; c-myc; c Myc; Myc;
<b>Isotype</b>	Rabbit IgG
<b>Host</b>	Rabbit
<b>Calculated MW</b>	50565

## Additional Information

<b>Dilution</b>	WB 1:500~1:2000 IHC 1:50~1:200 ICC/IF 100~1:500 IP 1:50
<b>Purification</b>	Affinity-chromatography
<b>Immunogen</b>	A synthesized peptide derived from human Phospho-c-Myc (S62)
<b>Description</b>	Myc a proto-oncogenic transcription factor that plays a role in cell proliferation, apoptosis and in the development of human tumors.. Seems to activate the transcription of growth-related genes.
<b>Storage Condition and Buffer</b>	Rabbit IgG in phosphate buffered saline , pH 7.4, 150mM NaCl, 0.02% sodium azide and 50% glycerol. Store at +4°C short term. Store at -20°C long term. Avoid freeze / thaw cycle.

## Protein Information

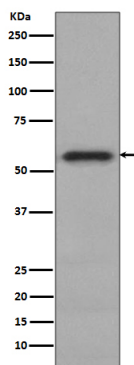
<b>Name</b>	MYC
<b>Synonyms</b>	BHLHE39
<b>Function</b>	Transcription factor that binds DNA in a non-specific manner, yet also specifically recognizes the core sequence 5'-CAC[GA]TG-3' (PubMed: <a href="#">24940000</a> , PubMed: <a href="#">25956029</a> ). Activates the transcription of growth-related genes (PubMed: <a href="#">24940000</a> , PubMed: <a href="#">25956029</a> ). Binds to the VEGFA promoter, promoting VEGFA production and subsequent sprouting angiogenesis (PubMed: <a href="#">24940000</a> , PubMed: <a href="#">25956029</a> ). Regulator of somatic reprogramming, controls self-renewal of embryonic stem cells (By similarity). Functions with TAF6L to activate target gene expression through RNA polymerase II pause release (By similarity). Positively regulates transcription of HNRNPA1, HNRNPA2 and PTBP1 which in turn regulate splicing of pyruvate kinase PKM by binding repressively to sequences flanking PKM exon 9, inhibiting exon 9 inclusion and resulting in exon 10 inclusion and production of the PKM M2 isoform (PubMed: <a href="#">20010808</a> ).

## Cellular Location

Nucleus, nucleoplasm. Nucleus, nucleolus. Nucleus. Cytoplasm Chromosome.  
Note=Association with chromatin is reduced by hyperphosphorylation  
(PubMed:30158517) Localization to the nucleolus is dependent on HEATR1  
(PubMed:38225354)

## Images

---



Western blot analysis of Phospho-c-Myc (S62) expression in HeLa cell lysate.

Image not found : 202311/AP90540-IHC.jpg

Immunohistochemical analysis of paraffin-embedded human lung carcinoma, using Phospho-c-Myc (S62) Antibody .

Please note: All products are 'FOR RESEARCH USE ONLY. NOT FOR USE IN DIAGNOSTIC OR THERAPEUTIC PROCEDURES'.