

Lysozyme Antibody

Rabbit mAb

Catalog # AP90547

Product Information

Application	WB, IHC, IF, ICC, IP, IHF
Primary Accession	P61626
Reactivity	Human, Mouse
Clonality	Monoclonal
Other Names	LYZ; LZM; LYSC; EC 3.2.1.17; 4-beta-N-acetylmuramidase C;
Isotype	Rabbit IgG
Host	Rabbit
Calculated MW	16537

Additional Information

Dilution	WB 1:5000~1:10000 IHC 1:50~1:200 ICC/IF 1:50~1:200 IP 1:20
Purification	Affinity-chromatography
Immunogen	A synthesized peptide derived from human Lysozyme
Description	Lysozymes have primarily a bacteriolytic function; those in tissues and body fluids are associated with the monocyte-macrophage system and enhance the activity of immunoagents.
Storage Condition and Buffer	Rabbit IgG in phosphate buffered saline , pH 7.4, 150mM NaCl, 0.02% sodium azide and 50% glycerol. Store at +4°C short term. Store at -20°C long term. Avoid freeze / thaw cycle.

Protein Information

Name	LYZ
Synonyms	LZM
Function	Lysozymes have primarily a bacteriolytic function; those in tissues and body fluids are associated with the monocyte-macrophage system and enhance the activity of immunoagents.
Cellular Location	Secreted.

Images

Western blot analysis of Lysozyme expression in K562 cell lysate;

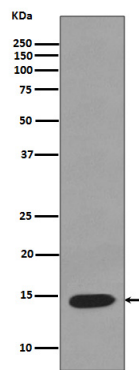


Image not found : 202311/AP90547-IHC.jpg

Immunohistochemical analysis of paraffin-embedded mouse kidney, using Lysozyme Antibody .

Please note: All products are 'FOR RESEARCH USE ONLY. NOT FOR USE IN DIAGNOSTIC OR THERAPEUTIC PROCEDURES'.