

# Cytokeratin 7 Antibody

Rabbit mAb

Catalog # AP90550

## Product Information

<b>Application</b>	WB, IHC, IF, FC, ICC, IP, IHF
<b>Primary Accession</b>	<a href="#">P08729</a>
<b>Reactivity</b>	Human
<b>Clonality</b>	Monoclonal
<b>Other Names</b>	CK-7; CK7; cytokeratin 7; Cytokeratin-7; K2C7; K7; keratin 7; Keratin-7; KRT7; Sarcolectin; SCL;
<b>Isotype</b>	Rabbit IgG
<b>Host</b>	Rabbit
<b>Calculated MW</b>	51386

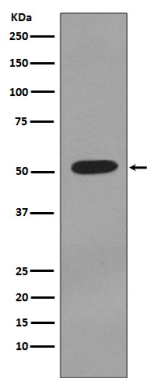
## Additional Information

<b>Dilution</b>	WB 1:5000~1:10000 IHC 1:50~1:200 ICC/IF 1:50~1:200 IP 1:20
<b>Purification</b>	Affinity-chromatography
<b>Immunogen</b>	A synthesized peptide derived from human Cytokeratin 7
<b>Description</b>	K7 a type II cytoskeletal keratin. The keratins are intermediate filament proteins responsible for the structural integrity of epithelial cells and are subdivided into cytokeratins and hair keratins. Phosphorylation of keratins at specific sites affects their organization, assembly dynamics, and their interaction with signaling molecules. Specifically expressed in the simple epithelia lining the cavities of the internal organs and in the gland ducts and blood vessels.
<b>Storage Condition and Buffer</b>	Rabbit IgG in phosphate buffered saline , pH 7.4, 150mM NaCl, 0.02% sodium azide and 50% glycerol. Store at +4°C short term. Store at -20°C long term. Avoid freeze / thaw cycle.

## Protein Information

<b>Name</b>	KRT7
<b>Synonyms</b>	SCL
<b>Function</b>	Blocks interferon-dependent interphase and stimulates DNA synthesis in cells. Involved in the translational regulation of the human papillomavirus type 16 E7 mRNA (HPV16 E7).
<b>Cellular Location</b>	Cytoplasm.
<b>Tissue Location</b>	Expressed in cultured epidermal, bronchial and mesothelial cells but absent in colon, ectocervix and liver. Observed throughout the glandular cells in the junction between stomach and esophagus but is absent in the esophagus.

Images



Western blot analysis of Cytokeratin 7 expression in T47D cell lysate.

Image not found : 202311/AP90550-IHC.jpg

Immunohistochemical analysis of paraffin-embedded human breast carcinoma, using Cytokeratin 7 Antibody .

Image not found : 202311/AP90550-IF.jpg

Immunofluorescent analysis of Hela cells, using Cytokeratin 7 Antibody.

Please note: All products are 'FOR RESEARCH USE ONLY. NOT FOR USE IN DIAGNOSTIC OR THERAPEUTIC PROCEDURES'.