

Cytokeratin 14 Antibody

Rabbit mAb

Catalog # AP90579

Product Information

Application	WB, IHC, IF, FC, ICC, IP, IHF
Primary Accession	P02533
Reactivity	Human
Clonality	Monoclonal
Other Names	Keratin type I cytoskeletal 14; Cytokeratin-14; CK-14; CK14;
Isotype	Rabbit IgG
Host	Rabbit
Calculated MW	51561

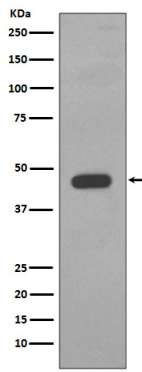
Additional Information

Dilution	WB 1:500~1:2000 IHC 1:50~1:200 ICC/IF 1:50~1:200 IP 1:50
Purification	Affinity-chromatography
Immunogen	A synthesized peptide derived from human Cytokeratin 14
Description	The nonhelical tail domain is involved in promoting KRT5-KRT14 filaments to self-organize into large bundles and enhances the mechanical properties involved in resilience of keratin intermediate filaments in vitro.
Storage Condition and Buffer	Rabbit IgG in phosphate buffered saline , pH 7.4, 150mM NaCl, 0.02% sodium azide and 50% glycerol. Store at +4°C short term. Store at -20°C long term. Avoid freeze / thaw cycle.

Protein Information

Name	KRT14
Function	The nonhelical tail domain is involved in promoting KRT5- KRT14 filaments to self-organize into large bundles and enhances the mechanical properties involved in resilience of keratin intermediate filaments in vitro.
Cellular Location	Cytoplasm. Nucleus. Note=Expressed in both as a filamentous pattern.
Tissue Location	Expressed in the corneal epithelium (at protein level) (PubMed:26758872). Detected in the basal layer, lowered within the more apically located layers specifically in the stratum spinosum, stratum granulosum but is not detected in stratum corneum. Strongly expressed in the outer root sheath of anagen follicles but not in the germinative matrix, inner root sheath or hair (PubMed:9457912). Found in keratinocytes surrounding the club hair during telogen (PubMed:9457912).

Images



Western blot analysis of Cytokeratin 14 expression in A431 cell lysate.

Image not found : 202311/AP90579-IHC.jpg

Immunohistochemical analysis of paraffin-embedded human skin, using Cytokeratin 14 Antibody.

Please note: All products are 'FOR RESEARCH USE ONLY. NOT FOR USE IN DIAGNOSTIC OR THERAPEUTIC PROCEDURES'.