

BCL2A1 Antibody

Rabbit mAb

Catalog # AP90585

Product Information

Application	WB, IHC, FC
Primary Accession	Q16548
Reactivity	Rat, Human, Mouse
Clonality	Monoclonal
Other Names	BCL2A1; ACC-1; ACC-2; Bcl-2-like protein 5; Bcl-2-related protein A1; BCL2-related protein A1; BFL1; Bcl2-L5; BCL2L5; GRS; HBPA1; Protein BFL-1; Protein GRS;
Isotype	Rabbit IgG
Host	Rabbit
Calculated MW	20132

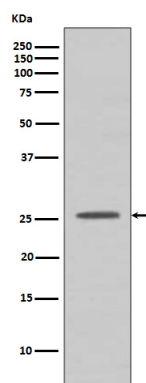
Additional Information

Dilution	WB 1:500~1:2000 IHC 1:50~1:200 FC 1:100
Purification	Affinity-chromatography
Immunogen	A synthesized peptide derived from human BCL2A1
Description	May function in the response of hemopoietic cells to external signals and in maintaining endothelial survival during infection.
Storage Condition and Buffer	Rabbit IgG in phosphate buffered saline , pH 7.4, 150mM NaCl, 0.02% sodium azide and 50% glycerol. Store at +4°C short term. Store at -20°C long term. Avoid freeze / thaw cycle.

Protein Information

Name	BCL2A1
Synonyms	BCL2L5, BFL1, GRS, HBPA1
Function	Retards apoptosis induced by IL-3 deprivation. May function in the response of hemopoietic cells to external signals and in maintaining endothelial survival during infection (By similarity). Can inhibit apoptosis induced by serum starvation in the mammary epithelial cell line HC11 (By similarity).
Cellular Location	Cytoplasm.
Tissue Location	Seems to be restricted to the hematopoietic compartment. Expressed in peripheral blood, spleen, and bone marrow, at moderate levels in lung, small intestine and testis, at a minimal levels in other tissues. Also found in vascular smooth muscle cells and hematopoietic malignancies

Images



Western blot analysis of BCL2A1 expression in Raji cell lysate.

Please note: All products are 'FOR RESEARCH USE ONLY. NOT FOR USE IN DIAGNOSTIC OR THERAPEUTIC PROCEDURES'.