

MMP8 Antibody

Rabbit mAb

Catalog # AP90591

Product Information

Application	WB, IHC, IF, FC, ICC, IP, IHF
Primary Accession	P22894
Reactivity	Rat, Human, Mouse
Clonality	Monoclonal
Other Names	HNC; CLG1; MMP-8; PMNL-CL; COLLAGENASE I; NEUTROPHIL; matrix metalloproteinase 8;
Isotype	Rabbit IgG
Host	Rabbit
Calculated MW	53412

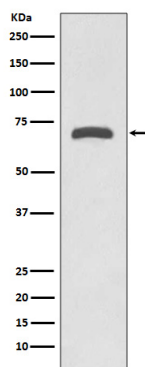
Additional Information

Dilution	WB 1:500~1:2000 IHC 1:50~1:200 ICC/IF 1:50~1:200 IP 1:50
Purification	Affinity-chromatography
Immunogen	A synthesized peptide derived from human MMP8
Description	Proteins of the matrix metalloproteinase (MMP) family are involved in the breakdown of extracellular matrix in normal physiological processes, such as embryonic development, reproduction, and tissue remodeling, as well as in disease processes, such as arthritis and metastasis. Most MMP's are secreted as inactive proproteins which are activated when cleaved by extracellular proteinases. However, the enzyme encoded by this gene is stored in secondary granules within neutrophils and is activated by autolytic cleavage. Its function is degradation of type I, II and III collagens. The gene is part of a cluster of MMP genes which localize to chromosome 11q22.3.
Storage Condition and Buffer	Rabbit IgG in phosphate buffered saline , pH 7.4, 150mM NaCl, 0.02% sodium azide and 50% glycerol. Store at +4°C short term. Store at -20°C long term. Avoid freeze / thaw cycle.

Protein Information

Name	MMP8
Synonyms	CLG1
Function	Can degrade fibrillar type I, II, and III collagens.
Cellular Location	Cytoplasmic granule. Secreted, extracellular space, extracellular matrix. Note=Stored in intracellular granules
Tissue Location	Neutrophils.

Images



Western blot analysis of MMP8 expression in Human placenta lysate.

Please note: All products are 'FOR RESEARCH USE ONLY. NOT FOR USE IN DIAGNOSTIC OR THERAPEUTIC PROCEDURES'.