

MLANA Antibody

Rabbit mAb

Catalog # AP90607

Product Information

| | |
|--------------------------|---|
| Application | WB, IHC, IF, FC, ICC, IHF |
| Primary Accession | Q16655 |
| Reactivity | Human |
| Clonality | Monoclonal |
| Other Names | Antigen LB39-AA; Antigen SK29-AA; MAR1; MART-1; MART1; melan-A; Melanoma antigen recognized by T-cells 1; MLANA; Protein Melan-A; |
| Isotype | Rabbit IgG |
| Host | Rabbit |
| Calculated MW | 13157 |

Additional Information

| | |
|-------------------------------------|---|
| Dilution | WB 1:1000~1:2000 IHC 1:50~1:200 ICC/IF 1:50~1:200 FC 1:200 |
| Purification | Affinity-chromatography |
| Immunogen | A synthesized peptide derived from human MLANA |
| Description | Involved in melanosome biogenesis by ensuring the stability of GPR143. Plays a vital role in the expression, stability, trafficking, and processing of melanocyte protein PMEL, which is critical to the formation of stage II melanosomes. |
| Storage Condition and Buffer | Rabbit IgG in phosphate buffered saline , pH 7.4, 150mM NaCl, 0.02% sodium azide and 50% glycerol. Store at +4°C short term. Store at -20°C long term. Avoid freeze / thaw cycle. |

Protein Information

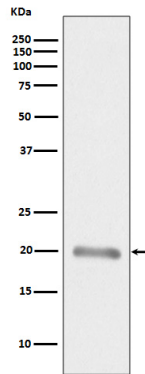
| | |
|--------------------------|---|
| Name | MLANA |
| Synonyms | MART1 |
| Function | Involved in melanosome biogenesis by ensuring the stability of GPR143. Plays a vital role in the expression, stability, trafficking, and processing of melanocyte protein PMEL, which is critical to the formation of stage II melanosomes. |
| Cellular Location | Endoplasmic reticulum membrane; Single-pass type III membrane protein. Golgi apparatus. Golgi apparatus, trans-Golgi network membrane. Melanosome. Note=Also found in small vesicles and tubules dispersed over the entire cytoplasm. A small fraction of the protein is inserted into the membrane in an inverted orientation Inversion of membrane topology results in the relocalization of the protein from a predominant Golgi/post-Golgi area to the endoplasmic reticulum. Melanoma cells expressing the protein with an |

inverted membrane topology are more effectively recognized by specific cytolytic T-lymphocytes than those expressing the protein in its native membrane orientation

Tissue Location

Expression is restricted to melanoma and melanocyte cell lines and retina

Images



Western blot analysis of MLANA expression in Human melanoma tissue lysate.

Image not found : 202311/AP90607-IHC.jpg

Immunohistochemical analysis of paraffin-embedded human melanoma, using MLANA Antibody.

Please note: All products are 'FOR RESEARCH USE ONLY. NOT FOR USE IN DIAGNOSTIC OR THERAPEUTIC PROCEDURES'.