

# Hemoglobin subunit alpha Antibody

Rabbit mAb

Catalog # AP90609

## Product Information

---

<b>Application</b>	WB, IHC, FC, IP
<b>Primary Accession</b>	<a href="#">P69905</a>
<b>Reactivity</b>	Rat, Human, Mouse
<b>Clonality</b>	Monoclonal
<b>Other Names</b>	HBA2; Alpha globin; Alpha-2 globin; HBH; Hemoglobin alpha chain; Hemoglobin A1c; Hemoglobin subunit alpha; Hemoglobin alpha 2; Alpha-globin;
<b>Isotype</b>	Rabbit IgG
<b>Host</b>	Rabbit
<b>Calculated MW</b>	15258

## Additional Information

---

<b>Dilution</b>	WB 1:500~1:2000 IHC 1:50~1:200 IP 1:50 FC 1:50
<b>Purification</b>	Affinity-chromatography
<b>Immunogen</b>	A synthesized peptide derived from human Hemoglobin subunit alpha
<b>Description</b>	Involved in oxygen transport from the lung to the various peripheral tissues.
<b>Storage Condition and Buffer</b>	Rabbit IgG in phosphate buffered saline , pH 7.4, 150mM NaCl, 0.02% sodium azide and 50% glycerol. Store at +4°C short term. Store at -20°C long term. Avoid freeze / thaw cycle.

## Protein Information

---

<b>Name</b>	HBA1
<b>Function</b>	Involved in oxygen transport from the lung to the various peripheral tissues.
<b>Tissue Location</b>	Red blood cells.

## Images

---

Western blot analysis of Hemoglobin subunit alpha expression in K562 cell lysate.

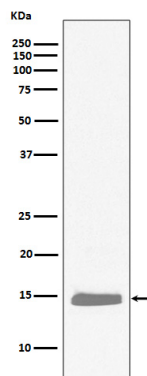


Image not found : 202311/AP90609-IHC.jpg

Immunohistochemical analysis of paraffin-embedded human spleen, using hemoglobin subunit alpha Antibody.

Please note: All products are 'FOR RESEARCH USE ONLY. NOT FOR USE IN DIAGNOSTIC OR THERAPEUTIC PROCEDURES'.