

# ERR alpha Antibody

Rabbit mAb

Catalog # AP90620

## Product Information

---

<b>Application</b>	WB, FC, IP
<b>Primary Accession</b>	<a href="#">P11474</a>
<b>Reactivity</b>	Rat, Human, Mouse
<b>Clonality</b>	Monoclonal
<b>Other Names</b>	ESRRA; ERRa; ERR1; HERR1; NR3B1; Steroid hormone receptor ERR1; ERR-alpha; ERRalpha; ESRL1; Estrogen receptor-like 1; Estrogen-related receptor alpha;
<b>Isotype</b>	Rabbit IgG
<b>Host</b>	Rabbit
<b>Calculated MW</b>	45510

## Additional Information

---

<b>Dilution</b>	WB 1:1000~1:2000 IP 1:50 FC 1:20
<b>Purification</b>	Affinity-chromatography
<b>Immunogen</b>	A synthesized peptide derived from human ERR alpha
<b>Description</b>	Estrogen-related receptor alpha (ERR $\alpha$ /NR3B1) is an orphan nuclear receptor that controls transcription of genes involved in fatty acid oxidation, glucose metabolism, and mitochondrial biogenesis. The receptor protein contains a non-conserved amino terminal domain (NTD), a central zinc finger DNA binding domain, and a ligand-binding domain. The carboxy-terminal AF2 helix motif of ERR $\alpha$ contains binding sites for nuclear receptor coactivators PGC-1 $\alpha$ and PGC-1 $\beta$ . Research studies demonstrate that ERR $\alpha$ transcriptional activity is regulated through phosphorylation and sumoylation within the NTD.
<b>Storage Condition and Buffer</b>	Rabbit IgG in phosphate buffered saline , pH 7.4, 150mM NaCl, 0.02% sodium azide and 50% glycerol. Store at +4°C short term. Store at -20°C long term. Avoid freeze / thaw cycle.

## Protein Information

---

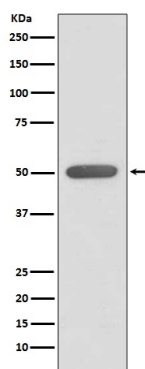
<b>Name</b>	ESRRA
<b>Synonyms</b>	ERR1, ESRL1, NR3B1
<b>Function</b>	Binds to an ERR-alpha response element (ERRE) containing a single consensus half-site, 5'-TNAAGGTCA-3'. Can bind to the medium- chain acyl coenzyme A dehydrogenase (MCAD) response element NRRE-1 and may act as an important regulator of MCAD promoter. Binds to the C1 region of the lactoferrin gene promoter. Requires dimerization and the coactivator, PGC-1A, for full activity. The ERRalpha/PGC1alpha complex is a regulator of energy metabolism. Induces the expression of PERM1 in the skeletal muscle.

## Cellular Location

Nucleus {ECO:0000255 | PROSITE-ProRule:PRU00407, ECO:0000269 | PubMed:18063693, ECO:0000269 | PubMed:21190936}.  
Cytoplasm. Note=Co-localizes to the cytoplasm only in presence of MAPK15.

## Images

---



Western blot analysis of ERR alpha expression in HeLa cell lysate.

Please note: All products are 'FOR RESEARCH USE ONLY. NOT FOR USE IN DIAGNOSTIC OR THERAPEUTIC PROCEDURES'.