

Fibronectin Antibody

Rabbit mAb

Catalog # AP90624

Product Information

Application	WB, IHC, IF, ICC, IHF
Primary Accession	P02751
Reactivity	Human
Clonality	Monoclonal
Other Names	Anastellin; CIG; Cold-insoluble globulin; ED-B; Fibronectin; fibronectin 1; FINC; FN1; FN2; GFND; GFND2; LETS; migration-stimulating factor; MSF;
Isotype	Rabbit IgG
Host	Rabbit
Calculated MW	272320

Additional Information

Dilution	WB 1:500~1:2000 IHC 1:50~1:200 ICC/IF 1:50~1:200
Purification	Affinity-chromatography
Immunogen	A synthesized peptide derived from human Fibronectin
Description	FN1 Fibronectins bind cell surfaces and various compounds including collagen, fibrin, heparin, DNA, and actin. Fibronectins are involved in cell adhesion, cell motility, opsonization, wound healing, and maintenance of cell shape. Mostly heterodimers or multimers of alternatively spliced variants, connected by 2 disulfide bonds near the carboxyl ends; to a lesser extent homodimers.
Storage Condition and Buffer	Rabbit IgG in phosphate buffered saline , pH 7.4, 150mM NaCl, 0.02% sodium azide and 50% glycerol. Store at +4°C short term. Store at -20°C long term. Avoid freeze / thaw cycle.

Protein Information

Name	FN1 (HGNC:3778)
Synonyms	FN
Function	Fibronectins bind cell surfaces and various compounds including collagen, fibrin, heparin, DNA, and actin (PubMed: 3024962 , PubMed: 3593230 , PubMed: 3900070 , PubMed: 7989369). Fibronectins are involved in cell adhesion, cell motility, opsonization, wound healing, and maintenance of cell shape (PubMed: 3024962 , PubMed: 3593230 , PubMed: 3900070 , PubMed: 7989369). Involved in osteoblast compaction through the fibronectin fibrillogenesis cell-mediated matrix assembly process, essential for osteoblast mineralization (By similarity). Participates in the regulation of type I collagen deposition by osteoblasts (By similarity). Acts as a ligand for the LILRB4 receptor, inhibiting FCGR1A/CD64-mediated monocyte activation

(PubMed:[34089617](#)).

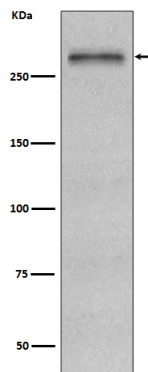
Cellular Location

Secreted, extracellular space, extracellular matrix. Secreted {ECO:0000250|UniProtKB:P11276}

Tissue Location

Expressed in the inner limiting membrane and around blood vessels in the retina (at protein level) (PubMed:29777959) Plasma FN (soluble dimeric form) is secreted by hepatocytes. Cellular FN (dimeric or cross-linked multimeric forms), made by fibroblasts, epithelial and other cell types, is deposited as fibrils in the extracellular matrix. Ugl-Y1, Ugl-Y2 and Ugl-Y3 are found in urine (PubMed:17614963).

Images



Western blot analysis of Fibronectin expression in HepG2 cell lysate.

Image not found : 202311/AP90624-IHC.jpg

Immunohistochemical analysis of paraffin-embedded human liver cancer, using Fibronectin Antibody.

Please note: All products are 'FOR RESEARCH USE ONLY. NOT FOR USE IN DIAGNOSTIC OR THERAPEUTIC PROCEDURES'.