

Cytochrome C Antibody

Rabbit mAb

Catalog # AP90631

Product Information

Application	WB, IHC
Primary Accession	P99999
Reactivity	Rat, Human, Mouse
Clonality	Monoclonal
Other Names	CYC; CYCS; Cytochrome c; cytochrome c, somatic; HCS; THC4
Isotype	Rabbit IgG
Host	Rabbit
Calculated MW	11749

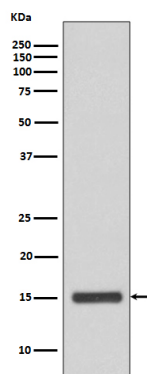
Additional Information

Dilution	WB 1:500~1:2000 IHC 1:50~1:200
Purification	Affinity-chromatography
Immunogen	A synthesized peptide derived from human Cytochrome C
Description	CYCS Electron carrier protein. The oxidized form of the cytochrome c heme group can accept an electron from the heme group of the cytochrome c1 subunit of cytochrome reductase. Cytochrome c then transfers this electron to the cytochrome oxidase complex, the final protein carrier in the mitochondrial electron-transport chain.
Storage Condition and Buffer	Rabbit IgG in phosphate buffered saline , pH 7.4, 150mM NaCl, 0.02% sodium azide and 50% glycerol. Store at +4°C short term. Store at -20°C long term. Avoid freeze / thaw cycle.

Protein Information

Name	CYCS
Synonyms	CYC
Function	Electron carrier protein. The oxidized form of the cytochrome c heme group can accept an electron from the heme group of the cytochrome c1 subunit of cytochrome reductase. Cytochrome c then transfers this electron to the cytochrome oxidase complex, the final protein carrier in the mitochondrial electron-transport chain.
Cellular Location	Mitochondrion intermembrane space. Note=Loosely associated with the inner membrane

Images



Western blot analysis of Cytochrome C expression in HeLa cell lysate.

Image not found : 202311/AP90631-IHC.jpg

Immunohistochemical analysis of paraffin-embedded human colonic cancer, using Cytochrome C Antibody.

Please note: All products are 'FOR RESEARCH USE ONLY. NOT FOR USE IN DIAGNOSTIC OR THERAPEUTIC PROCEDURES'.