

MSI2 Antibody

Rabbit mAb

Catalog # AP90632

Product Information

Application	WB, IHC, IF, FC, ICC, IHF
Primary Accession	Q96DH6
Reactivity	Rat, Human, Mouse
Clonality	Monoclonal
Other Names	MSI2H; MGC3245; MSI2;
Isotype	Rabbit IgG
Host	Rabbit
Calculated MW	35197

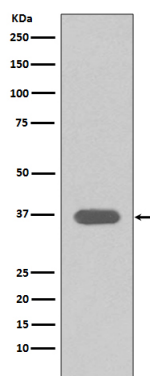
Additional Information

Dilution	WB 1:500~1:2000 IHC 1:50~1:200 ICC/IF 1:50~1:200 FC 1:30
Purification	Affinity-chromatography
Immunogen	A synthesized peptide derived from human MSI2
Description	Msi2 (musashi homolog 2), also known as MSI2H, is a 328 amino acid protein that localizes to the cytoplasm and contains two RRM (RNA recognition motif) domains. Expressed ubiquitously at low levels, Msi2 functions as an RNA binding protein that, by regulating the expression of target mRNAs, is thought to play a role in the proliferation and maintenance of stem cells within the central nervous system. Msi2 is subject to posttranslational phosphorylation and is upregulated in response to brain injury, suggesting a role in healing and brain tissue regeneration.
Storage Condition and Buffer	Rabbit IgG in phosphate buffered saline , pH 7.4, 150mM NaCl, 0.02% sodium azide and 50% glycerol. Store at +4°C short term. Store at -20°C long term. Avoid freeze / thaw cycle.

Protein Information

Name	MSI2
Function	RNA binding protein that regulates the expression of target mRNAs at the translation level. May play a role in the proliferation and maintenance of stem cells in the central nervous system (By similarity).
Cellular Location	Cytoplasm. Note=Associated with polysomes.
Tissue Location	Ubiquitous; detected at low levels.

Images



Western blot analysis of MSI2 expression in T47 D cell lysate.

Image not found : 202311/AP90632-IHC.jpg

Immunohistochemical analysis of paraffin-embedded human lung carcinoma, using MSI2 Antibody.

Please note: All products are 'FOR RESEARCH USE ONLY. NOT FOR USE IN DIAGNOSTIC OR THERAPEUTIC PROCEDURES'.