

SCF Antibody

Rabbit mAb

Catalog # AP90647

Product Information

Application	WB, IHC, IF, FC, ICC, IHF
Primary Accession	P21583
Reactivity	Human
Clonality	Monoclonal
Other Names	SF; SCF; MGF; FPH2; KL-1; Kitl;
Isotype	Rabbit IgG
Host	Rabbit
Calculated MW	30899

Additional Information

Dilution	WB 1:500~1:2000 IHC 1:50~1:200 ICC/IF 1:50~1:200 FC 1:20
Purification	Affinity-chromatography
Immunogen	A synthesized peptide derived from human SCF
Description	Ligand for the receptor-type protein-tyrosine kinase KIT. Plays an essential role in the regulation of cell survival and proliferation, hematopoiesis, stem cell maintenance, gametogenesis, mast cell development, migration and function, and in melanogenesis. KITLG/SCF binding can activate several signaling pathways. Promotes phosphorylation of PIK3R1, the regulatory subunit of phosphatidylinositol 3-kinase, and subsequent activation of the kinase AKT1.
Storage Condition and Buffer	Rabbit IgG in phosphate buffered saline , pH 7.4, 150mM NaCl, 0.02% sodium azide and 50% glycerol. Store at +4°C short term. Store at -20°C long term. Avoid freeze / thaw cycle.

Protein Information

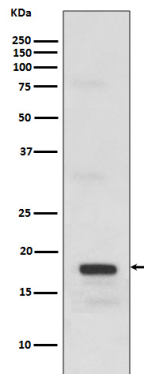
Name	KITLG (HGNC:6343)
Synonyms	MGF, SCF
Function	Ligand for the receptor-type protein-tyrosine kinase KIT. Plays an essential role in the regulation of cell survival and proliferation, hematopoiesis, stem cell maintenance, gametogenesis, mast cell development, migration and function, and in melanogenesis. KITLG/SCF binding can activate several signaling pathways. Promotes phosphorylation of PIK3R1, the regulatory subunit of phosphatidylinositol 3-kinase, and subsequent activation of the kinase AKT1. KITLG/SCF and KIT also transmit signals via GRB2 and activation of RAS, RAF1 and the MAP kinases MAPK1/ERK2 and/or MAPK3/ERK1. KITLG/SCF and KIT promote activation of STAT family members STAT1, STAT3 and STAT5. KITLG/SCF and KIT promote activation of PLCG1, leading to the

production of the cellular signaling molecules diacylglycerol and inositol 1,4,5-trisphosphate. KITLG/SCF acts synergistically with other cytokines, probably interleukins.

Cellular Location

[Isoform 1]: Cell membrane; Single-pass type I membrane protein [Soluble KIT ligand]: Secreted.

Images



Western blot analysis of SCF expression in recombinant protein.

Image not found : 202311/AP90647-IHC.jpg

Immunohistochemical analysis of paraffin-embedded human stomach, using SCF Antibody.

Please note: All products are 'FOR RESEARCH USE ONLY. NOT FOR USE IN DIAGNOSTIC OR THERAPEUTIC PROCEDURES'.