

Radixin Antibody

Rabbit mAb

Catalog # AP90653

Product Information

Application	WB, IHC, IF, FC, ICC, IP, IHF
Primary Accession	P35241
Reactivity	Rat, Human, Mouse
Clonality	Monoclonal
Other Names	RDX; Radixin; Protein roadkill; HIB; ESP10; DFNB24; RADI;
Isotype	Rabbit IgG
Host	Rabbit
Calculated MW	68564

Additional Information

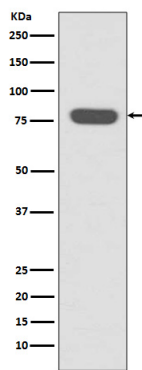
Dilution	WB 1:5000~1:10000 IHC 1:50~1:200 ICC/IF 1:50~1:200 IP 1:100 FC 1:100
Purification	Affinity-chromatography
Immunogen	A synthesized peptide derived from human Radixin
Description	Probably plays a crucial role in the binding of the barbed end of actin filaments to the plasma membrane.
Storage Condition and Buffer	Rabbit IgG in phosphate buffered saline , pH 7.4, 150mM NaCl, 0.02% sodium azide and 50% glycerol. Store at +4°C short term. Store at -20°C long term. Avoid freeze / thaw cycle.

Protein Information

Name	RDX
Function	Probably plays a crucial role in the binding of the barbed end of actin filaments to the plasma membrane.
Cellular Location	Cell membrane; Peripheral membrane protein; Cytoplasmic side. Cytoplasm, cytoskeleton. Cleavage furrow. Cell projection, microvillus {ECO:0000250 UniProtKB:P26043}. Cell projection, stereocilium {ECO:0000250 UniProtKB:P26043}. Note=Enriched at the stereocilium base with very low levels in the shaft of stereociliary bundles (By similarity). Highly concentrated in the undercoat of the cell-to-cell adherens junction and the cleavage furrow in the interphase and mitotic phase, respectively {ECO:0000250 UniProtKB:P26043}

Images

Western blot analysis of Radixin expression in HeLa cell



lysate.

Image not found : 202311/AP90653-IHC.jpg

Immunohistochemical analysis of paraffin-embedded human spleen, using Radixin Antibody.

Please note: All products are 'FOR RESEARCH USE ONLY. NOT FOR USE IN DIAGNOSTIC OR THERAPEUTIC PROCEDURES'.