

LSP1 Antibody

Rabbit mAb

Catalog # AP90656

Product Information

Application	WB, IHC, IF, ICC, IHF
Primary Accession	P33241
Reactivity	Rat, Human, Mouse
Clonality	Monoclonal
Other Names	Lymphocyte-specific protein 1; Protein pp52; 52 kDa phosphoprotein; Lymphocyte-specific antigen WP34; 47 kDa actin-binding protein;
Isotype	Rabbit IgG
Host	Rabbit
Calculated MW	37192

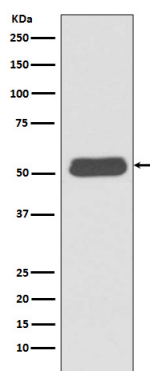
Additional Information

Dilution	WB 1:1000~1:2000 IHC 1:50~1:200 ICC/IF 1:50~1:200
Purification	Affinity-chromatography
Immunogen	A synthesized peptide derived from human LSP1
Description	LSP1 is a 52 kDa leukocyte-specific protein expressed in B cells, T cells, macrophages and neutrophils. The protein binds F-actin through its C-terminal actin-binding repeat and regulates cytoskeletal-related cellular movement such as polarization, chemotaxis and locomotion. LSP1 is a phospho-protein and has been identified as a major substrate of MAP kinase and PKC in lymphocytes and neutrophils.
Storage Condition and Buffer	Rabbit IgG in phosphate buffered saline , pH 7.4, 150mM NaCl, 0.02% sodium azide and 50% glycerol. Store at +4°C short term. Store at -20°C long term. Avoid freeze / thaw cycle.

Protein Information

Name	LSP1
Synonyms	WP34
Function	May play a role in mediating neutrophil activation and chemotaxis.
Cellular Location	Cell membrane; Peripheral membrane protein; Cytoplasmic side
Tissue Location	Activated T-lymphocytes.

Images



Western blot analysis of LSP1 expression in Ramos cell lysate.

Please note: All products are 'FOR RESEARCH USE ONLY. NOT FOR USE IN DIAGNOSTIC OR THERAPEUTIC PROCEDURES'.