

NSE Antibody

Rabbit mAb

Catalog # AP90659

Product Information

Application	WB, IHC, IF, FC, ICC, IHF
Primary Accession	P09104
Reactivity	Rat, Human, Mouse
Clonality	Monoclonal
Other Names	ENO2; ENOG; Enolase 2; enolase 2 (gamma, neuronal); Gamma-enolase; Neural enolase; neuron specific gamma enolase; Neuron-specific enolase; neurone-specific enolase; NSE;
Isotype	Rabbit IgG
Host	Rabbit
Calculated MW	47269

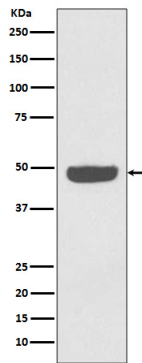
Additional Information

Dilution	WB 1:5000~1:10000 IHC 1:50~1:200 ICC/IF 1:50~1:200 FC 1:50
Purification	Affinity-chromatography
Immunogen	A synthesized peptide derived from human NSE
Description	ENO2 an enzyme with 2-phospho-D-glycerate hydro-lyase activity. One of the three enolase isoenzymes found in mammals. This isoenzyme, a homodimer, is found in mature neurons and cells of neuronal origin. A switch from alpha enolase to gamma enolase occurs in neural tissue during development in rats and primates.
Storage Condition and Buffer	Rabbit IgG in phosphate buffered saline , pH 7.4, 150mM NaCl, 0.02% sodium azide and 50% glycerol. Store at +4°C short term. Store at -20°C long term. Avoid freeze / thaw cycle.

Protein Information

Name	ENO2
Function	Has neurotrophic and neuroprotective properties on a broad spectrum of central nervous system (CNS) neurons. Binds, in a calcium- dependent manner, to cultured neocortical neurons and promotes cell survival (By similarity).
Cellular Location	Cytoplasm. Cell membrane. Note=Can translocate to the plasma membrane in either the homodimeric (alpha/alpha) or heterodimeric (alpha/gamma) form
Tissue Location	The alpha/alpha homodimer is expressed in embryo and in most adult tissues. The alpha/beta heterodimer and the beta/beta homodimer are found in striated muscle, and the alpha/gamma heterodimer and the

Images



Western blot analysis of NSE expression in HeLa cell lysate.

Image not found : 202311/AP90659-IHC.jpg

Immunohistochemical analysis of paraffin-embedded human uterus cancer, using NSE Antibody.

Image not found : 202311/AP90659-IF.jpg

Immunofluorescent analysis of A431 cells, using NSE Antibody.

Please note: All products are 'FOR RESEARCH USE ONLY. NOT FOR USE IN DIAGNOSTIC OR THERAPEUTIC PROCEDURES'.