

# IKK alpha+beta Antibody

Rabbit mAb

Catalog # AP90663

## Product Information

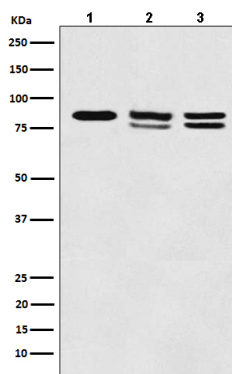
<b>Application</b>	WB, IF, ICC, IP
<b>Primary Accession</b>	<a href="#">O15111/O14920</a>
<b>Reactivity</b>	Rat, Human, Mouse
<b>Clonality</b>	Monoclonal
<b>Other Names</b>	I-kappa-B kinase 2; I-kappa-B-kinase beta; IKBKB; IKK-B; IKK-beta; IKK2; IKKB;
<b>Isotype</b>	Rabbit IgG
<b>Host</b>	Rabbit
<b>Calculated MW</b>	75 KDa

## Additional Information

<b>Dilution</b>	WB 1:500~1:1000 ICC/IF 1:50~1:100 IP 1:50
<b>Purification</b>	Affinity-chromatography
<b>Immunogen</b>	A synthesized peptide derived from human IKK alpha+beta
<b>Description</b>	IKK-beta a kinase of the IKK family. Phosphorylates inhibitors of NF-kappa-B thus leading to the dissociation of the inhibitor/NF-kappa-B complex and ultimately the degradation of the inhibitor. Preferentially found as a heterodimer with IKK-alpha but also as an homodimer.
<b>Storage Condition and Buffer</b>	Rabbit IgG in phosphate buffered saline , pH 7.4, 150mM NaCl, 0.02% sodium azide and 50% glycerol. Store at +4°C short term. Store at -20°C long term. Avoid freeze / thaw cycle.

## Protein Information

## Images



Western blot analysis of IKK alpha+beta expression in (1) A431 cell lysate; (2) 293T cell lysate; (3) Mouse kidney lysate.

Please note: All products are 'FOR RESEARCH USE ONLY. NOT FOR USE IN DIAGNOSTIC OR THERAPEUTIC PROCEDURES'.