

Phospho-MSK1 (S376) Antibody

Rabbit mAb

Catalog # AP90666

Product Information

Application	WB, IHC, IF, ICC, IP, IHF
Primary Accession	O75582
Reactivity	Rat, Human
Clonality	Monoclonal
Other Names	90 kDa ribosomal protein S6 kinase polypeptide 5; EC 2.7.11.1; KS6A5; MSPK1; Nuclear mitogen- and stress-activated protein kinase-1; RLPK; RPS6KA5; kinase MSK1; ribosomal protein S6 kinase;
Isotype	Rabbit IgG
Host	Rabbit
Calculated MW	89865

Additional Information

Dilution	WB 1:500~1:2000 IHC 1:50~1:200 ICC/IF1:50~1:200 IP 1:50
Purification	Affinity-chromatography
Immunogen	A synthesized peptide derived from human Phospho-MSK1 (S376)
Description	Serine/threonine-protein kinase that is required for the mitogen or stress-induced phosphorylation of the transcription factors CREB1 and ATF1 and for the regulation of the transcription factors RELA, STAT3 and ETV1/ER81, and that contributes to gene activation by histone phosphorylation and functions in the regulation of inflammatory genes. Phosphorylates CREB1 and ATF1 in response to mitogenic or stress stimuli such as UV-C irradiation, epidermal growth factor (EGF) and anisomycin.
Storage Condition and Buffer	Rabbit IgG in phosphate buffered saline , pH 7.4, 150mM NaCl, 0.02% sodium azide and 50% glycerol. Store at +4°C short term. Store at -20°C long term. Avoid freeze / thaw cycle.

Protein Information

Name	RPS6KA5
Synonyms	MSK1
Function	Serine/threonine-protein kinase that is required for the mitogen or stress-induced phosphorylation of the transcription factors CREB1 and ATF1 and for the regulation of the transcription factors RELA, STAT3 and ETV1/ER81, and that contributes to gene activation by histone phosphorylation and functions in the regulation of inflammatory genes (PubMed: 11909979 , PubMed: 12569367 , PubMed: 12763138 , PubMed: 18511904 , PubMed: 9687510 , PubMed: 9873047). Phosphorylates CREB1 and ATF1 in response to mitogenic or stress stimuli such as UV-C irradiation, epidermal growth factor (EGF) and

anisomycin (PubMed:[11909979](#), PubMed:[9873047](#)). Plays an essential role in the control of RELA transcriptional activity in response to TNF and upon glucocorticoid, associates in the cytoplasm with the glucocorticoid receptor NR3C1 and contributes to RELA inhibition and repression of inflammatory gene expression (PubMed:[12628924](#), PubMed:[18511904](#)). In skeletal myoblasts is required for phosphorylation of RELA at 'Ser-276' during oxidative stress (PubMed:[12628924](#)). In erythropoietin-stimulated cells, is necessary for the 'Ser-727' phosphorylation of STAT3 and regulation of its transcriptional potential (PubMed:[12763138](#)). Phosphorylates ETV1/ER81 at 'Ser-191' and 'Ser-216', and thereby regulates its ability to stimulate transcription, which may be important during development and breast tumor formation (PubMed:[12569367](#)). Directly represses transcription via phosphorylation of 'Ser-1' of histone H2A (PubMed:[15010469](#)). Phosphorylates 'Ser-10' of histone H3 in response to mitogenics, stress stimuli and EGF, which results in the transcriptional activation of several immediate early genes, including proto-oncogenes c-fos/FOS and c-jun/JUN (PubMed:[12773393](#)). May also phosphorylate 'Ser-28' of histone H3 (PubMed:[12773393](#)). Mediates the mitogen- and stress-induced phosphorylation of high mobility group protein 1 (HMG1/HMG14) (PubMed:[12773393](#)). In lipopolysaccharide-stimulated primary macrophages, acts downstream of the Toll-like receptor TLR4 to limit the production of pro-inflammatory cytokines (By similarity). Functions probably by inducing transcription of the MAP kinase phosphatase DUSP1 and the anti-inflammatory cytokine interleukin 10 (IL10), via CREB1 and ATF1 transcription factors (By similarity). Plays a role in neuronal cell death by mediating the downstream effects of excitotoxic injury (By similarity). Phosphorylates TRIM7 at 'Ser-107' in response to growth factor signaling via the MEK/ERK pathway, thereby stimulating its ubiquitin ligase activity (PubMed:[25851810](#)).

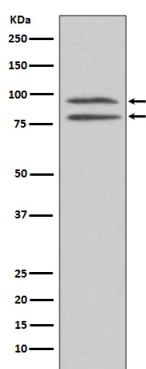
Cellular Location

Nucleus. Cytoplasm. Note=Predominantly nuclear. Exported into cytoplasm in response to glucocorticoid

Tissue Location

Widely expressed with high levels in heart, brain and placenta. Less abundant in lung, kidney and liver

Images



Western blot analysis of Phospho-MSK1 (S376) expression in HEK293 cell lysate treated with EGF.

Image not found : 202311/AP90666-IHC.jpg

Immunohistochemical analysis of paraffin-embedded human lung cancer, using Phospho-MSK1 (S376) Antibody.

Please note: All products are 'FOR RESEARCH USE ONLY. NOT FOR USE IN DIAGNOSTIC OR THERAPEUTIC PROCEDURES'.