

P Glycoprotein Antibody

Rabbit mAb

Catalog # AP90672

Product Information

Application	WB, IHC
Primary Accession	P08183
Reactivity	Rat, Human, Mouse
Clonality	Monoclonal
Other Names	CD243; MDR1; MDR3; Multidrug resistance protein 1; P-glycoprotein 1; PGY1;
Isotype	Rabbit IgG
Host	Rabbit
Calculated MW	141479

Additional Information

Dilution	WB 1:500~1:2000 IHC 1:50~1:200
Purification	Affinity-chromatography
Immunogen	A synthesized peptide derived from human P Glycoprotein
Description	A chronic, relapsing inflammation of the gastrointestinal tract with a complex etiology. It is subdivided into Crohn disease and ulcerative colitis phenotypes. Crohn disease may affect any part of the gastrointestinal tract from the mouth to the anus, but most frequently it involves the terminal ileum and colon.
Storage Condition and Buffer	Rabbit IgG in phosphate buffered saline , pH 7.4, 150mM NaCl, 0.02% sodium azide and 50% glycerol. Store at +4°C short term. Store at -20°C long term. Avoid freeze / thaw cycle.

Protein Information

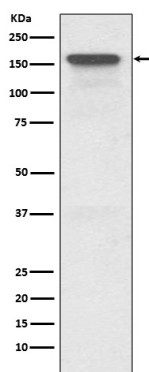
Name	ABCB1 (HGNC:40)
Synonyms	MDR1, PGY1
Function	Translocates drugs and phospholipids across the membrane (PubMed: 2897240 , PubMed: 35970996 , PubMed: 8898203 , PubMed: 9038218 , PubMed: 35507548). Catalyzes the flop of phospholipids from the cytoplasmic to the exoplasmic leaflet of the apical membrane. Participates mainly to the flop of phosphatidylcholine, phosphatidylethanolamine, beta-D-glucosylceramides and sphingomyelins (PubMed: 8898203). Energy-dependent efflux pump responsible for decreased drug accumulation in multidrug-resistant cells (PubMed: 2897240 , PubMed: 35970996 , PubMed: 9038218).
Cellular Location	Cell membrane; Multi-pass membrane protein {ECO:0000255 PROSITE-ProRule:PRU00441} Apical cell membrane. Cytoplasm

Note=ABCB1 localization is influenced by C1orf115 expression levels (plasma membrane versus cytoplasm). Localized to the apical membrane of enterocytes (PubMed:28408210).

Tissue Location

Expressed in small intestine (PubMed:28408210). Expressed in liver, kidney and brain.

Images



Western blot analysis of P Glycoprotein expression in HeLa cell lysate.

Image not found : 202311/AP90672-IHC.jpg

Immunohistochemical analysis of paraffin-embedded human liver, using P Glycoprotein Antibody.

Please note: All products are 'FOR RESEARCH USE ONLY. NOT FOR USE IN DIAGNOSTIC OR THERAPEUTIC PROCEDURES'.