

Phospho-CrkII (Tyr221) Antibody

Rabbit mAb

Catalog # AP90675

Product Information

Application	WB, IF, ICC
Primary Accession	P46108
Reactivity	Human
Clonality	Monoclonal
Other Names	Adapter molecule crk; avian sarcoma virus CT10 (v-crk) oncogene homolog; CRK; CRKII; Proto-oncogene c-Crk;
Isotype	Rabbit IgG
Host	Rabbit
Calculated MW	33831

Additional Information

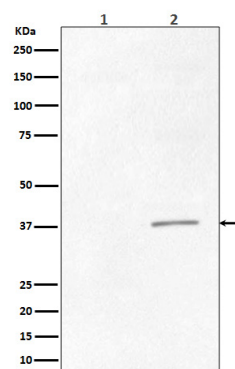
Dilution	WB 1:1000~1:2000 ICC/IF 1:50~1:200
Purification	Affinity-chromatography
Immunogen	A synthesized peptide derived from human Phospho-CrkII (Tyr221)
Description	The Crk-I and Crk-II forms differ in their biological activities. Crk-II has less transforming activity than Crk-I. Crk-II mediates attachment-induced MAPK8 activation, membrane ruffling and cell motility in a Rac-dependent manner. Involved in phagocytosis of apoptotic cells and cell motility via its interaction with DOCK1 and DOCK4. May regulate the EFNA5-EPHA3 signaling.
Storage Condition and Buffer	Rabbit IgG in phosphate buffered saline , pH 7.4, 150mM NaCl, 0.02% sodium azide and 50% glycerol. Store at +4°C short term. Store at -20°C long term. Avoid freeze / thaw cycle.

Protein Information

Name	CRK
Function	Involved in cell branching and adhesion mediated by BCAR1- CRK-RAPGEF1 signaling and activation of RAP1.
Cellular Location	Cytoplasm. Cell membrane. Note=Translocated to the plasma membrane upon cell adhesion.

Images

Western blot analysis of Phospho-CrkII (Tyr221) expression in (1) K562 cell lysate treated with AP; (2) K562 cell lysate.



Please note: All products are 'FOR RESEARCH USE ONLY. NOT FOR USE IN DIAGNOSTIC OR THERAPEUTIC PROCEDURES'.