

# Cytokeratin 14 Antibody

Rabbit mAb

Catalog # AP90686

## Product Information

<b>Application</b>	WB, IHC, IF, ICC, IHF
<b>Primary Accession</b>	<a href="#">P02533</a>
<b>Reactivity</b>	Rat, Human, Mouse
<b>Clonality</b>	Monoclonal
<b>Other Names</b>	CK-14; CK14; cytokeratin 14; Cytokeratin-14; EBS3; EBS4; K14; K1C14; keratin 14; Keratin, type I cytoskeletal 14; Keratin-14; KRT14; NFJ;
<b>Isotype</b>	Rabbit IgG
<b>Host</b>	Rabbit
<b>Calculated MW</b>	51561

## Additional Information

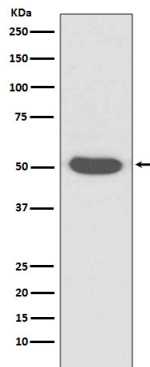
<b>Dilution</b>	WB 1:1000~1:2000 IHC 1:50~1:200 ICC/IF 1:50~1:200
<b>Purification</b>	Affinity-chromatography
<b>Immunogen</b>	A synthesized peptide derived from human Cytokeratin 14
<b>Description</b>	K14 a type I cytoskeletal keratin. The keratins are intermediate filament proteins responsible for the structural integrity of epithelial cells and are subdivided into cytokeratins and hair keratins. There are two types of cytoskeletal and microfibrillar keratin: type I (acidic; 40-55 kDa) [K9 to K20] and type II (neutral to basic; 56-70 kDa) [K1 to K8]. Both a basic and an acidic keratin are required for filament assembly.
<b>Storage Condition and Buffer</b>	Rabbit IgG in phosphate buffered saline , pH 7.4, 150mM NaCl, 0.02% sodium azide and 50% glycerol. Store at +4°C short term. Store at -20°C long term. Avoid freeze / thaw cycle.

## Protein Information

<b>Name</b>	KRT14
<b>Function</b>	The nonhelical tail domain is involved in promoting KRT5- KRT14 filaments to self-organize into large bundles and enhances the mechanical properties involved in resilience of keratin intermediate filaments in vitro.
<b>Cellular Location</b>	Cytoplasm. Nucleus. Note=Expressed in both as a filamentous pattern.
<b>Tissue Location</b>	Expressed in the corneal epithelium (at protein level) (PubMed:26758872). Detected in the basal layer, lowered within the more apically located layers specifically in the stratum spinosum, stratum granulosum but is not detected in stratum corneum. Strongly expressed in the outer root sheath of anagen follicles but not in the germinative matrix, inner root sheath or hair (PubMed:9457912). Found in keratinocytes surrounding the club hair during

## Images

---



Western blot analysis of Cytokeratin 14 expression in A431 cell lysate.

Image not found : 202311/AP90686-IHC.jpg

Immunohistochemical analysis of paraffin-embedded human stomach, using Cytokeratin 14 Antibody.

Image not found : 202311/AP90686-IF.jpg

Immunofluorescent analysis of HACAT cells, using Cytokeratin 14 Antibody.

Please note: All products are 'FOR RESEARCH USE ONLY. NOT FOR USE IN DIAGNOSTIC OR THERAPEUTIC PROCEDURES'.