

# RPS20 Antibody

Rabbit mAb

Catalog # AP90688

## Product Information

---

<b>Application</b>	WB, IHC, IF, ICC, IHF
<b>Primary Accession</b>	<a href="#">P60866</a>
<b>Reactivity</b>	Rat, Human, Mouse
<b>Clonality</b>	Monoclonal
<b>Other Names</b>	40S ribosomal protein S20; RS20; Ribosomal protein S20; RPS 20;
<b>Isotype</b>	Rabbit IgG
<b>Host</b>	Rabbit
<b>Calculated MW</b>	13373

## Additional Information

---

<b>Dilution</b>	WB 1:1000~1:2000 IHC 1:50~1:200 ICC/IF 1:50~1:200
<b>Purification</b>	Affinity-chromatography
<b>Immunogen</b>	A synthesized peptide derived from human RPS20
<b>Description</b>	RPS20 is a ribosomal protein that is a component of the 40S subunit. Ribosomes, the organelles that catalyze protein synthesis, consist of a small 40S subunit and a large 60S subunit. Together these subunits are composed of 4 RNA species and approximately 80 structurally distinct proteins. RPS20 belongs to the S10P family of ribosomal proteins and is located in the cytoplasm.
<b>Storage Condition and Buffer</b>	Rabbit IgG in phosphate buffered saline , pH 7.4, 150mM NaCl, 0.02% sodium azide and 50% glycerol. Store at +4°C short term. Store at -20°C long term. Avoid freeze / thaw cycle.

## Protein Information

---

<b>Name</b>	RPS20
<b>Function</b>	Component of the small ribosomal subunit (PubMed: <a href="#">23636399</a> ). The ribosome is a large ribonucleoprotein complex responsible for the synthesis of proteins in the cell (PubMed: <a href="#">23636399</a> ).
<b>Cellular Location</b>	Cytoplasm.

## Images

---

Western blot analysis of RPS20 expression in HeLa cell lysate.

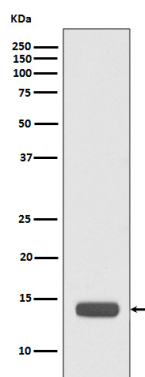


Image not found : 202311/AP90688-IHC.jpg

Immunohistochemical analysis of paraffin-embedded human kidney, using RPS20 Antibody.

Please note: All products are 'FOR RESEARCH USE ONLY. NOT FOR USE IN DIAGNOSTIC OR THERAPEUTIC PROCEDURES'.