

RAD18 Antibody

Rabbit mAb

Catalog # AP90693

Product Information

Application	WB, FC
Primary Accession	Q9NS91
Reactivity	Rat, Human, Mouse
Clonality	Monoclonal
Other Names	E3 ubiquitin-protein ligase RAD18; hHR18; hRAD18; RAD18; RAD18, S. cerevisiae, homolog; RING finger protein 73; RNF73;
Isotype	Rabbit IgG
Host	Rabbit
Calculated MW	56223

Additional Information

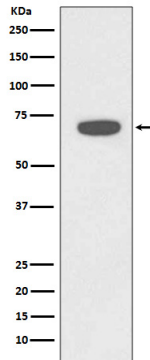
Dilution	WB 1:10000~1:20000 FC 1:20
Purification	Affinity-chromatography
Immunogen	A synthesized peptide derived from human RAD18
Description	RAD18 a structural maintenance of chromosomes (SMC) protein involved in postreplication repair of UV-damaged DNA. Has ssDNA binding activity. Interacts with Rad6 through a conserved ring-finger motif. Rad6 is an ubiquitin-conjugating enzyme required for post-replication repair of damaged DNA.
Storage Condition and Buffer	Rabbit IgG in phosphate buffered saline , pH 7.4, 150mM NaCl, 0.02% sodium azide and 50% glycerol. Store at +4°C short term. Store at -20°C long term. Avoid freeze / thaw cycle.

Protein Information

Name	RAD18
Synonyms	RNF73
Function	E3 ubiquitin-protein ligase involved in postreplication repair of UV-damaged DNA. Postreplication repair functions in gap- filling of a daughter strand on replication of damaged DNA. Associates to the E2 ubiquitin conjugating enzyme UBE2B to form the UBE2B-RAD18 ubiquitin ligase complex involved in mono-ubiquitination of DNA- associated PCNA on 'Lys-164'. Has ssDNA binding activity.
Cellular Location	Nucleus. Cytoplasm, cytoskeleton, microtubule organizing center, centrosome. Note=Associates with chromatin (PubMed:25931565). Colocalizes with SLF1 in the nucleus and to centrosomes (PubMed:15632077). Relocalizes with SLF1 to nuclear foci in response to DNA damage

(PubMed:22036607). Accumulates with the SLF1- SLF2 and SMC5-SMC6 complexes at replication-coupled DNA interstrand repair and DNA double-strand breaks (DSBs) sites on chromatin in a ubiquitin-dependent manner (PubMed:25931565)

Images



Western blot analysis of RAD18 expression in HeLa cell lysate.

Please note: All products are 'FOR RESEARCH USE ONLY. NOT FOR USE IN DIAGNOSTIC OR THERAPEUTIC PROCEDURES'.