

# Annexin A10 Antibody

Rabbit mAb

Catalog # AP90696

## Product Information

<b>Application</b>	WB
<b>Primary Accession</b>	<a href="#">Q9UJ72</a>
<b>Reactivity</b>	Rat, Human, Mouse
<b>Clonality</b>	Monoclonal
<b>Other Names</b>	annexin 14; annexin A10; annexin-14; ANX10; ANX14;
<b>Isotype</b>	Rabbit IgG
<b>Host</b>	Rabbit
<b>Calculated MW</b>	37278

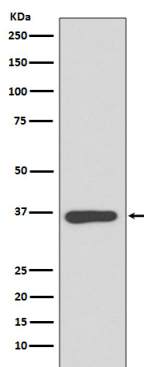
## Additional Information

<b>Dilution</b>	WB 1:500~1:2000
<b>Purification</b>	Affinity-chromatography
<b>Immunogen</b>	A synthesized peptide derived from human Annexin A10
<b>Description</b>	Belongs to the annexin family. Contains 4 annexin repeats.
<b>Storage Condition and Buffer</b>	Rabbit IgG in phosphate buffered saline , pH 7.4, 150mM NaCl, 0.02% sodium azide and 50% glycerol. Store at +4°C short term. Store at -20°C long term. Avoid freeze / thaw cycle.

## Protein Information

<b>Name</b>	ANXA10
<b>Synonyms</b>	ANX14

## Images



Western blot analysis of Annexin A10 expression in HeLa cell lysate.

Please note: All products are 'FOR RESEARCH USE ONLY. NOT FOR USE IN DIAGNOSTIC OR THERAPEUTIC PROCEDURES'.