

NSD3 Antibody

Rabbit mAb

Catalog # AP90698

Product Information

Application	WB, FC
Primary Accession	Q9BZ95
Reactivity	Rat, Human, Mouse
Clonality	Monoclonal
Other Names	Wolf Hirschhorn syndrome candidate 1 like 1; WHSC1L1; NSD3; pp14328; Histone-lysine N-methyltransferase NSD3; Protein whistle;
Isotype	Rabbit IgG
Host	Rabbit
Calculated MW	161613

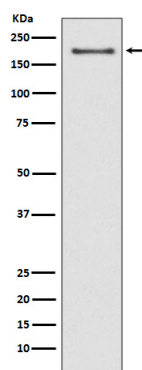
Additional Information

Dilution	WB 1:1000~1:5000 FC 1:30
Purification	Affinity-chromatography
Immunogen	A synthesized peptide derived from human NSD3
Description	This gene is related to the Wolf-Hirschhorn syndrome candidate-1 gene and encodes a protein with PWWP (proline-tryptophan-tryptophan-proline) domains. The function of the protein has not been determined. Two alternatively spliced variants have been described.
Storage Condition and Buffer	Rabbit IgG in phosphate buffered saline , pH 7.4, 150mM NaCl, 0.02% sodium azide and 50% glycerol. Store at +4°C short term. Store at -20°C long term. Avoid freeze / thaw cycle.

Protein Information

Name	NSD3 (HGNC:12767)
Synonyms	WHSC1L1
Function	Histone methyltransferase. Preferentially dimethylates 'Lys- 4' and 'Lys-27' of histone H3 forming H3K4me2 and H3K27me2. H3 'Lys-4' methylation represents a specific tag for epigenetic transcriptional activation, while 'Lys-27' is a mark for transcriptional repression.
Cellular Location	Nucleus. Chromosome.
Tissue Location	Highly expressed in brain, heart and skeletal muscle. Expressed at lower level in liver and lung

Images



Western blot analysis of NSD3 expression in MCF-7 cell lysate.

Please note: All products are 'FOR RESEARCH USE ONLY. NOT FOR USE IN DIAGNOSTIC OR THERAPEUTIC PROCEDURES'.