

Smac/Diablo Antibody

Rabbit mAb

Catalog # AP90708

Product Information

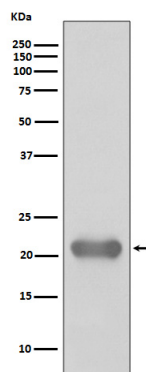
Application	WB, IHC, IF, FC, ICC, IP, IHF
Primary Accession	Q9NR28
Reactivity	Rat, Human, Mouse
Clonality	Monoclonal
Other Names	SMAC; DFNA64; DIABLO; SMAC3;
Isotype	Rabbit IgG
Host	Rabbit
Calculated MW	21 kDa

Additional Information

Dilution	WB 1:1000~1:5000 IHC 1:50~1:200 ICC/IF 1:100~1:500 IP 1:50 FC 1:50
Purification	Affinity-chromatography
Immunogen	A synthesized peptide derived from human Smac/Diablo
Description	Smac/Diablo is a 21 kDa mammalian mitochondrial protein that functions as a regulatory component during apoptosis. Upon mitochondrial stress, Smac/Diablo is released from mitochondria and competes with caspases for binding of IAPs (inhibitor of apoptosis proteins). The interaction of Smac/Diablo with IAPs relieves the inhibitory effect of the IAPs on caspases.
Storage Condition and Buffer	Rabbit IgG in phosphate buffered saline , pH 7.4, 150mM NaCl, 0.02% sodium azide and 50% glycerol. Store at +4°C short term. Store at -20°C long term. Avoid freeze / thaw cycle.

Protein Information

Images



Western blot analysis of Smac/Diablo expression in Jurkat cell lysate.

Image not found : 202311/AP90708-IHC.jpg

Immunohistochemical analysis of paraffin-embedded human kidney, using Smac/Diablo Antibody.

Please note: All products are 'FOR RESEARCH USE ONLY. NOT FOR USE IN DIAGNOSTIC OR THERAPEUTIC PROCEDURES'.