

HLA-DRA Antibody

Rabbit mAb

Catalog # AP90710

Product Information

Application	WB, IHC, IF, FC, ICC, IHF
Primary Accession	P01903
Reactivity	Human
Clonality	Monoclonal
Other Names	HLA-DR; MLRW; HLA-DRA1; MHC class II antigen DRA; HLA class II histocompatibility antigen, DR alpha chain; HLA DRB1; DRA;
Isotype	Rabbit IgG
Host	Rabbit
Calculated MW	28621

Additional Information

Dilution	WB 1:1000~1:5000 IHC 1:50~1:200 ICC/IF 1:50~1:200 FC 1:50
Purification	Affinity-chromatography
Immunogen	A synthesized peptide derived from human HLA-DRA
Description	HLA-DRA is one of the HLA class II alpha chain paralogues. This class II molecule is a heterodimer consisting of an alpha and a beta chain, both anchored in the membrane. It plays a central role in the immune system by presenting peptides derived from extracellular proteins. Class II molecules are expressed in antigen presenting cells (APC: B lymphocytes, dendritic cells, macrophages).
Storage Condition and Buffer	Rabbit IgG in phosphate buffered saline , pH 7.4, 150mM NaCl, 0.02% sodium azide and 50% glycerol. Store at +4°C short term. Store at -20°C long term. Avoid freeze / thaw cycle.

Protein Information

Name	HLA-DRA
Synonyms	HLA-DRA1
Function	An alpha chain of antigen-presenting major histocompatibility complex class II (MHCII) molecule. In complex with the beta chain HLA- DRB, displays antigenic peptides on professional antigen presenting cells (APCs) for recognition by alpha-beta T cell receptor (TCR) on HLA-DR-restricted CD4-positive T cells. This guides antigen-specific T- helper effector functions, both antibody-mediated immune response and macrophage activation, to ultimately eliminate the infectious agents and transformed cells (PubMed: 15265931 , PubMed: 15322540 , PubMed: 17334368 , PubMed: 22327072 , PubMed: 24190431 , PubMed: 27591323 , PubMed: 29884618 , PubMed: 31495665 , PubMed: 8145819 , PubMed: 9075930).

Typically presents extracellular peptide antigens of 10 to 30 amino acids that arise from proteolysis of endocytosed antigens in lysosomes (PubMed:[8145819](#)). In the tumor microenvironment, presents antigenic peptides that are primarily generated in tumor-resident APCs likely via phagocytosis of apoptotic tumor cells or macropinocytosis of secreted tumor proteins (PubMed:[31495665](#)). Presents peptides derived from intracellular proteins that are trapped in autolysosomes after macroautophagy, a mechanism especially relevant for T cell selection in the thymus and central immune tolerance (PubMed:[17182262](#), PubMed:[23783831](#)). The selection of the immunodominant epitopes follows two processing modes: 'bind first, cut/trim later' for pathogen-derived antigenic peptides and 'cut first, bind later' for autoantigens/self- peptides (PubMed:[25413013](#)). The anchor residue at position 1 of the peptide N-terminus, usually a large hydrophobic residue, is essential for high affinity interaction with MHCII molecules (PubMed:[8145819](#)).

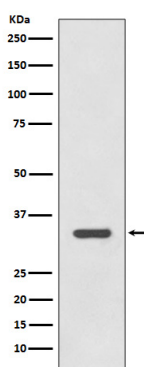
Cellular Location

Cell membrane; Single-pass type I membrane protein. Endoplasmic reticulum membrane; Single-pass type I membrane protein. Early endosome membrane; Single-pass type I membrane protein. Late endosome membrane; Single-pass type I membrane protein. Lysosome membrane; Single-pass type I membrane protein. Autolysosome membrane; Single-pass type I membrane protein. Note=The MHCII complex transits through a number of intracellular compartments in the endocytic pathway until it reaches the cell membrane for antigen presentation (PubMed:18305173, PubMed:9075930). Component of immunological synapses at the interface between T cell and APC (PubMed:15322540, PubMed:29884618).

Tissue Location

Expressed in professional APCs: macrophages, dendritic cells and B cells (at protein level) (PubMed:15322540, PubMed:23783831, PubMed:31495665). Expressed in thymic epithelial cells (at protein level) (PubMed:23783831).

Images



Western blot analysis of HLA-DRA expression in Raji cell lysate.

Image not found : 202311/AP90710-IHC.jpg

Immunohistochemical analysis of paraffin-embedded human lung, using HLA-DRA Antibody.

Image not found : 202311/AP90710-IF.jpg

Immunofluorescent analysis of Raji cells, using HLA-DRA Antibody.

Please note: All products are 'FOR RESEARCH USE ONLY. NOT FOR USE IN DIAGNOSTIC OR THERAPEUTIC PROCEDURES'.