

CD21 Antibody

Rabbit mAb

Catalog # AP90713

Product Information

Application	WB, IHC, IF, FC, ICC, IP, IHF
Primary Accession	P20023
Reactivity	Human, Mouse
Clonality	Monoclonal
Other Names	CR2; C3DR; CD21 antigen; CVID7; Complement receptors type 2; CD21; Complement C3d receptor; EBV receptor; SLEB9; Complement receptor type 2; CR; Epstein-Barr virus receptor;
Isotype	Rabbit IgG
Host	Rabbit
Calculated MW	112916

Additional Information

Dilution	WB 1:1000~1:5000 IHC 1:50~1:200 ICC/IF 1:50~1:200 IP 1:50 FC 1:50
Purification	Affinity-chromatography
Immunogen	A synthesized peptide derived from human CD21
Description	Receptor for complement C3Dd, for the Epstein-Barr virus on human B-cells and T-cells and for HNRPU. Participates in B lymphocytes activation. (Microbial infection) Acts as a receptor for Epstein-Barr virus.
Storage Condition and Buffer	Rabbit IgG in phosphate buffered saline , pH 7.4, 150mM NaCl, 0.02% sodium azide and 50% glycerol. Store at +4°C short term. Store at -20°C long term. Avoid freeze / thaw cycle.

Protein Information

Name	CR2
Synonyms	C3DR
Function	Serves as a receptor for various ligands including complement component CD3d, HNRNPU OR IFNA1 (PubMed: 1849076 , PubMed: 21527715 , PubMed: 7753047). When C3d is bound to antigens, attaches to C3d on B- cell surface and thereby facilitates the recognition and uptake of antigens by B-cells (PubMed: 21527715). This interaction enhances B-cell activation and subsequent immune responses. Forms a complex with several partners on the surface of B-cells including CD19, FCRL5 and CD81, to form the B-cell coreceptor complex that plays a crucial role in B-cell activation and signaling (PubMed: 1383329 , PubMed: 30107486). Also induces specific intracellular signaling separately from the BCR and CD19 by activating the tyrosine kinase SRC, which then phosphorylates nucleolin/NCL and triggers AKT and GSK3 kinase activities in a SYK/CD19-independent manner (PubMed: 12938232). Acts

as a ligand for CD23 (FcεRII), a low-affinity receptor for IgE, which is expressed on B-cells and other immune cells, and thus participates in the regulation of IgE production (PubMed:[1386409](#)).

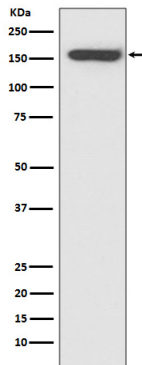
Cellular Location

Cell membrane; Single-pass type I membrane protein

Tissue Location

Mature B-lymphocytes, T-lymphocytes, pharyngeal epithelial cells, astrocytes and follicular dendritic cells of the spleen

Images



Western blot analysis of CD21 expression in Raji cell lysate.

Image not found : 202311/AP90713-IHC.jpg

Immunohistochemical analysis of paraffin-embedded human spleen, using CD21 Antibody.

Please note: All products are 'FOR RESEARCH USE ONLY. NOT FOR USE IN DIAGNOSTIC OR THERAPEUTIC PROCEDURES'.