

MEKK2 Antibody

Rabbit mAb

Catalog # AP90714

Product Information

Application	WB, IHC, IF, FC, ICC, IP, IHF
Primary Accession	Q9Y2U5
Reactivity	Rat, Human, Mouse
Clonality	Monoclonal
Other Names	MAP3K2; MAP/ERK kinase kinase 2; MAPK/ERK kinase kinase 2; MAPKKK2; MEK kinase 2; MEKK 2; MEKK2; MEKK2B;
Isotype	Rabbit IgG
Host	Rabbit
Calculated MW	69741

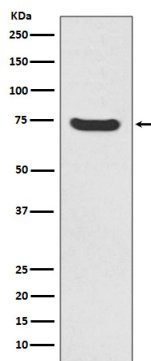
Additional Information

Dilution	WB 1:5000~1:20000 IHC 1:50~1:200 ICC/IF 1:50~1:200 IP 1:30 FC 1:50
Purification	Affinity-chromatography
Immunogen	A synthesized peptide derived from human MEKK2
Description	The protein encoded by this gene is a member of serine/threonine protein kinase family. This kinase preferentially activates the kinases involved in the MAP kinase signaling pathway including MAPK7 and MAP2K4. This kinase has been shown to directly phosphorylate and activate Ikappa B kinases (IKKs), and thus plays a role in NF-kappa B signaling pathway. This kinase has also been found to bind and activate protein kinase C-related kinase 2 (PRKCL2/PRK2), which suggests its involvement in PRKCL2 regulated signaling process.
Storage Condition and Buffer	Rabbit IgG in phosphate buffered saline , pH 7.4, 150mM NaCl, 0.02% sodium azide and 50% glycerol. Store at +4°C short term. Store at -20°C long term. Avoid freeze / thaw cycle.

Protein Information

Name	MAP3K2
Synonyms	MAPKKK2, MEKK2
Function	Component of a protein kinase signal transduction cascade. Regulates the JNK and ERK5 pathways by phosphorylating and activating MAP2K5 and MAP2K7 (By similarity). Plays a role in caveolae kiss-and- run dynamics.
Cellular Location	Cytoplasm. Nucleus. Note=Upon EGF stimulation, translocates into the nucleus

Images



Western blot analysis of MEKK2 expression in HeLa cell lysate.

Image not found : 202311/AP90714-IHC.jpg

Immunohistochemical analysis of paraffin-embedded human thyroid cancer, using MEKK2 Antibody.

Please note: All products are 'FOR RESEARCH USE ONLY. NOT FOR USE IN DIAGNOSTIC OR THERAPEUTIC PROCEDURES'.