

DKK1 Antibody

Rabbit mAb

Catalog # AP90718

Product Information

Application	WB, IHC, IF, FC, ICC, IHF
Primary Accession	O94907
Reactivity	Rat, Human
Clonality	Monoclonal
Other Names	SK; DKK-1; Dickkopf-related protein 1; Dickkopf-1; hDkk-1; Dickkopf homolog 1;
Isotype	Rabbit IgG
Host	Rabbit
Calculated MW	28672

Additional Information

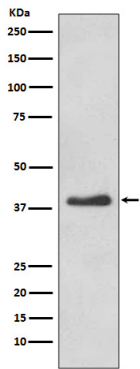
Dilution	WB 1:1000~1:2000 IHC 1:50~1:200 ICC/IF 1:50~1:200 FC 1:50
Purification	Affinity-chromatography
Immunogen	A synthesized peptide derived from human DKK1
Description	DKK1: dickkopf homolog 1 (<i>Xenopus laevis</i>), also known as SK. Entrez Protein NP_036374. DKK1 is a member of the dickkopf family. It is a secreted protein with two cysteine rich regions and is involved in embryonic development through its inhibition of the WNT signaling pathway. Elevated levels of DKK1 in bone marrow plasma and peripheral blood is associated with the presence of osteolytic bone lesions in patients with multiple myeloma.
Storage Condition and Buffer	Rabbit IgG in phosphate buffered saline , pH 7.4, 150mM NaCl, 0.02% sodium azide and 50% glycerol. Store at +4°C short term. Store at -20°C long term. Avoid freeze / thaw cycle.

Protein Information

Name	DKK1
Function	Antagonizes canonical Wnt signaling by inhibiting LRP5/6 interaction with Wnt and by forming a ternary complex with the transmembrane protein KREMEN that promotes internalization of LRP5/6 (PubMed: 22000856). DKKs play an important role in vertebrate development, where they locally inhibit Wnt regulated processes such as antero-posterior axial patterning, limb development, somitogenesis and eye formation. In the adult, Dkks are implicated in bone formation and bone disease, cancer and Alzheimer disease (PubMed: 17143291). Inhibits the pro-apoptotic function of KREMEN1 in a Wnt-independent manner, and has anti-apoptotic activity (By similarity).
Cellular Location	Secreted.

Tissue Location Placenta.

Images



Western blot analysis of DKK1 expression in HeLa cell lysate.

Image not found : 202311/AP90718-IHC.jpg

Immunohistochemical analysis of paraffin-embedded human placenta, using DKK1 Antibody.

Please note: All products are 'FOR RESEARCH USE ONLY. NOT FOR USE IN DIAGNOSTIC OR THERAPEUTIC PROCEDURES'.