

Mast Cell Tryptase Antibody

Rabbit mAb

Catalog # AP90719

Product Information

Application	WB, IHC, IP
Primary Accession	Q15661
Reactivity	Rat, Human, Mouse
Clonality	Monoclonal
Other Names	TPS1; TPS2; TPSAB1; TPSB1; MCP 7; Mast cell protease 7; Tryptase alpha 1;
Isotype	Rabbit IgG
Host	Rabbit
Calculated MW	30515

Additional Information

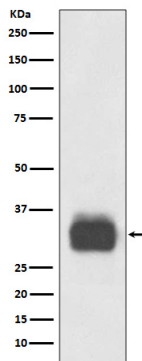
Dilution	WB 1:500~1:2000 IHC 1:50~1:200 IP 1:50
Purification	Affinity-chromatography
Immunogen	A synthesized peptide derived from human Mast Cell Tryptase
Description	Tryptases comprise a family of trypsin-like serine proteases, the peptidase family S1. Tryptases are enzymatically active only as heparin-stabilized tetramers, and they are resistant to all known endogenous proteinase inhibitors. Several tryptase genes are clustered on chromosome 16p13.3. These genes are characterized by several distinct features.
Storage Condition and Buffer	Rabbit IgG in phosphate buffered saline , pH 7.4, 150mM NaCl, 0.02% sodium azide and 50% glycerol. Store at +4°C short term. Store at -20°C long term. Avoid freeze / thaw cycle.

Protein Information

Name	TPSAB1
Synonyms	TPS1, TPS2, TPSB1
Function	Tryptase is the major neutral protease present in mast cells and is secreted upon the coupled activation-degranulation response of this cell type. May play a role in innate immunity. Isoform 2 cleaves large substrates, such as fibronectin, more efficiently than isoform 1, but seems less efficient toward small substrates (PubMed: 18854315).
Cellular Location	Secreted. Note=Released from the secretory granules upon mast cell activation.
Tissue Location	Isoform 1 and isoform 2 are expressed in lung, stomach, spleen, heart and skin; in these tissues, isoform 1 is predominant. Isoform 2 is expressed in aorta, spleen, and breast tumor, with highest levels in the endothelial cells of

some blood vessels surrounding the aorta, as well as those surrounding the tumor and low levels, if any, in mast cells (at protein level)

Images



Western blot analysis of Mast Cell Tryptase expression in Human tonsil lysate.

Image not found : 202311/AP90719-IHC.jpg

Immunohistochemical analysis of paraffin-embedded human kidney, using Mast Cell Tryptase Antibody.

Please note: All products are 'FOR RESEARCH USE ONLY. NOT FOR USE IN DIAGNOSTIC OR THERAPEUTIC PROCEDURES'.