

AGTR2 Antibody

Rabbit mAb

Catalog # AP90721

Product Information

Application	WB, IP
Primary Accession	P50052
Reactivity	Rat, Human, Mouse
Clonality	Monoclonal
Other Names	AGTR2; Angiotensin ii receptor type 2; Angiotensin II type-2 receptor; AT2 receptor; AT2; At2r; MRX88; Angiotensin ii at2; Angiotensin receptor 2; Type-2 angiotensin II receptor; ATGR2;
Isotype	Rabbit IgG
Host	Rabbit
Calculated MW	41184

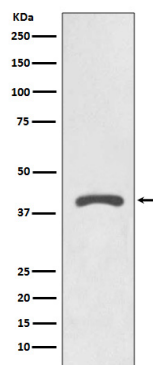
Additional Information

Dilution	WB 1:1000~1:2000 IP 1:50
Purification	Affinity-chromatography
Immunogen	A synthesized peptide derived from human AGTR2
Description	Receptor for angiotensin II. Cooperates with MTUS1 to inhibit ERK2 activation and cell proliferation.
Storage Condition and Buffer	Rabbit IgG in phosphate buffered saline , pH 7.4, 150mM NaCl, 0.02% sodium azide and 50% glycerol. Store at +4°C short term. Store at -20°C long term. Avoid freeze / thaw cycle.

Protein Information

Name	AGTR2 {ECO:0000303 PubMed:7790004, ECO:0000312 HGNC:HGNC:338}
Function	Receptor for angiotensin II, a vasoconstricting peptide (PubMed: 28379944 , PubMed: 29967536 , PubMed: 31899086 , PubMed: 8185599). Signals primarily via a non-canonical G-protein- and beta-arrestin independent pathways (PubMed: 28379944). Cooperates with MTUS1 to inhibit ERK2 activation and cell proliferation (PubMed: 15123706).
Cellular Location	Cell membrane {ECO:0000250 UniProtKB:P35374}; Multi-pass membrane protein
Tissue Location	In adult, highly expressed in myometrium with lower levels in adrenal gland and fallopian tube. Expressed in the cerebellum. Very highly expressed in fetal kidney and intestine

Images



Western blot analysis of AGTR2 expression in HepG2 cell lysate.

Please note: All products are 'FOR RESEARCH USE ONLY. NOT FOR USE IN DIAGNOSTIC OR THERAPEUTIC PROCEDURES'.