

TCF7L2 Antibody

Rabbit mAb

Catalog # AP90723

Product Information

Application	WB, IHC, IF, FC, ICC, IP, IHF
Primary Accession	Q9NQB0
Reactivity	Rat, Human, Mouse
Clonality	Monoclonal
Other Names	TCF7L2; HMG box transcription factor 4; HTCF-4; T-cell factor-4 variant X2; T-cell factor 4; Transcription factor 7-like 2; TCF-4;
Isotype	Rabbit IgG
Host	Rabbit
Calculated MW	67919

Additional Information

Dilution	WB 1:5000~1:20000 IHC 1:50~1:200 ICC/IF 1:50~1:200 IP 1:50 FC1:50
Purification	Affinity-chromatography
Immunogen	A synthesized peptide derived from human TCF7L2
Description	Participates in the Wnt signaling pathway and modulates MYC expression by binding to its promoter in a sequence-specific manner. Acts as repressor in the absence of CTNNB1, and as activator in its presence. Activates transcription from promoters with several copies of the Tcf motif 5'-CCTTTGATC-3' in the presence of CTNNB1. TLE1, TLE2, TLE3 and TLE4 repress transactivation mediated by TCF7L2/TCF4 and CTNNB1.
Storage Condition and Buffer	Rabbit IgG in phosphate buffered saline , pH 7.4, 150mM NaCl, 0.02% sodium azide and 50% glycerol. Store at +4°C short term. Store at -20°C long term. Avoid freeze / thaw cycle.

Protein Information

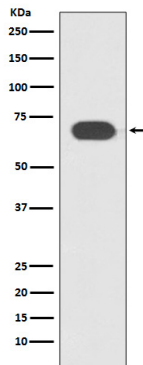
Name	TCF7L2
Synonyms	TCF4
Function	Participates in the Wnt signaling pathway and modulates MYC expression by binding to its promoter in a sequence-specific manner. Acts as a repressor in the absence of CTNNB1, and as activator in its presence. Activates transcription from promoters with several copies of the Tcf motif 5'-CCTTTGATC-3' in the presence of CTNNB1. TLE1, TLE2, TLE3 and TLE4 repress transactivation mediated by TCF7L2/TCF4 and CTNNB1. Expression of dominant-negative mutants results in cell-cycle arrest in G1. Necessary for the maintenance of the epithelial stem-cell compartment of the small intestine.
Cellular Location	Nucleus, PML body. Nucleus. Note=Diffuse pattern. Colocalizes with SUMO1

and PIAS4 in a subset of PML (promyelocytic leukemia) nuclear bodies

Tissue Location

Detected in epithelium from small intestine, with the highest expression at the top of the crypts and a gradient of expression from crypt to villus. Detected in colon epithelium and colon cancer, and in epithelium from mammary gland and carcinomas derived therefrom.

Images



Western blot analysis of TCF7L2 expression in Jurkat cell lysate.

Image not found : 202311/AP90723-IHC.jpg

Immunohistochemical analysis of paraffin-embedded human colonic cancer, using TCF7L2 Antibody.

Please note: All products are 'FOR RESEARCH USE ONLY. NOT FOR USE IN DIAGNOSTIC OR THERAPEUTIC PROCEDURES'.