

JAG1 Antibody

Rabbit mAb

Catalog # AP90729

Product Information

Application	WB, IHC
Primary Accession	P78504
Reactivity	Human
Clonality	Monoclonal
Other Names	JAG1; AGS; AHD; Alagille syndrome; CD339 antigen; HJ1; Jagged1; JAGL1; Jagged; Jagged 1; Protein jagged-1; AWS; CD339; Soluble protein jagged;
Isotype	Rabbit IgG
Host	Rabbit
Calculated MW	133799

Additional Information

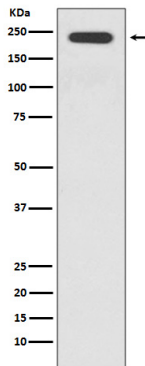
Dilution	WB 1:500~1:2000 IHC 1:50~1:200
Purification	Affinity-chromatography
Immunogen	A synthesized peptide derived from human JAG1
Description	Ligand for multiple Notch receptors and involved in the mediation of Notch signaling. May be involved in cell-fate decisions during hematopoiesis. Seems to be involved in early and late stages of mammalian cardiovascular development. Inhibits myoblast differentiation (By similarity). Enhances fibroblast growth factor-induced angiogenesis (in vitro).
Storage Condition and Buffer	Rabbit IgG in phosphate buffered saline , pH 7.4, 150mM NaCl, 0.02% sodium azide and 50% glycerol. Store at +4°C short term. Store at -20°C long term. Avoid freeze / thaw cycle.

Protein Information

Name	JAG1
Synonyms	JAGL1
Function	Ligand for multiple Notch receptors and involved in the mediation of Notch signaling (PubMed: 18660822 , PubMed: 20437614). May be involved in cell-fate decisions during hematopoiesis (PubMed: 9462510). Seems to be involved in early and late stages of mammalian cardiovascular development. Inhibits myoblast differentiation (By similarity). Enhances fibroblast growth factor-induced angiogenesis (in vitro).
Cellular Location	Membrane; Single-pass type I membrane protein. Cell membrane
Tissue Location	Widely expressed in adult and fetal tissues. In cervix epithelium expressed in undifferentiated subcolumnar reserve cells and squamous metaplasia.

Expression is up-regulated in cervical squamous cell carcinoma. Expressed in bone marrow cell line HS-27a which supports the long-term maintenance of immature progenitor cells

Images



Western blot analysis of JAG1 expression in HepG2 cell lysate.

Image not found : 202311/AP90729-IHC.jpg

Immunohistochemical analysis of paraffin-embedded human kidney, using JAG1 Antibody.

Please note: All products are 'FOR RESEARCH USE ONLY. NOT FOR USE IN DIAGNOSTIC OR THERAPEUTIC PROCEDURES'.