

CD13 Antibody

Rabbit mAb

Catalog # AP90738

Product Information

Application	WB, IHC, IF, ICC, IP, IHF
Primary Accession	P15144
Reactivity	Rat, Human, Mouse
Clonality	Monoclonal
Other Names	PEPN; Aminopeptidase N; AP-N; hAPN; Alanyl aminopeptidase; Aminopeptidase M; AP-M; Microsomal aminopeptidase; gp150; CD_antigen=CD13; ANPEP; APN; CD13;
Isotype	Rabbit IgG
Host	Rabbit
Calculated MW	109540

Additional Information

Dilution	WB 1:1000~1:2000 IHC 1:100~1:500 ICC/IF 1:100~1:500 IP1:50
Purification	Affinity-chromatography
Immunogen	A synthesized peptide derived from human CD13
Description	Aminopeptidase N (APN, CD13) is a widely expressed, membrane-bound proteolytic enzyme that breaks down peptides during digestion, cleaves cell surface antigens during antigen presentation, and acts as a receptor for human viruses, including several coronaviruses. Plays a role in the final digestion of peptides generated from hydrolysis of proteins by gastric and pancreatic proteases.
Storage Condition and Buffer	Rabbit IgG in phosphate buffered saline , pH 7.4, 150mM NaCl, 0.02% sodium azide and 50% glycerol. Store at +4°C short term. Store at -20°C long term. Avoid freeze / thaw cycle.

Protein Information

Name	ANPEP
Synonyms	APN, CD13, PEPN
Function	Broad specificity aminopeptidase which plays a role in the final digestion of peptides generated from hydrolysis of proteins by gastric and pancreatic proteases. Also involved in the processing of various peptides including peptide hormones, such as angiotensin III and IV, neuropeptides, and chemokines. May also be involved the cleavage of peptides bound to major histocompatibility complex class II molecules of antigen presenting cells. May have a role in angiogenesis and promote cholesterol crystallization. May have a role in amino acid transport by acting as binding partner of amino acid transporter SLC6A19 and regulating its activity (By similarity).

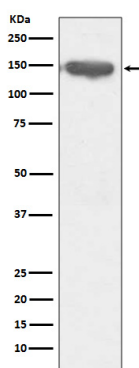
Cellular Location

Cell membrane; Single-pass type II membrane protein. Note=Also found as a soluble form

Tissue Location

Expressed in epithelial cells of the kidney, intestine, and respiratory tract; granulocytes, monocytes, fibroblasts, endothelial cells, cerebral pericytes at the blood-brain barrier, synaptic membranes of cells in the CNS. Also expressed in endometrial stromal cells, but not in the endometrial glandular cells. Found in the vasculature of tissues that undergo angiogenesis and in malignant gliomas and lymph node metastases from multiple tumor types but not in blood vessels of normal tissues. A soluble form has been found in plasma. It is found to be elevated in plasma and effusions of cancer patients.

Images



Western blot analysis of CD13 expression in THP-1 cell lysate.

Image not found : 202311/AP90738-IHC.jpg

Immunohistochemical analysis of paraffin-embedded human kidney, using CD13 Antibody.

Please note: All products are 'FOR RESEARCH USE ONLY. NOT FOR USE IN DIAGNOSTIC OR THERAPEUTIC PROCEDURES'.