

MUC16 Antibody

Rabbit mAb

Catalog # AP90739

Product Information

Application	WB, IF, FC, ICC
Primary Accession	Q8WXI7
Reactivity	Human
Clonality	Monoclonal
Other Names	Cancer antigen 125; CA125; CA125 ovarian cancer; MUC 16; Mucin16; Ovarian cancer related tumor marker CA125;
Isotype	Rabbit IgG
Host	Rabbit
Calculated MW	1519175

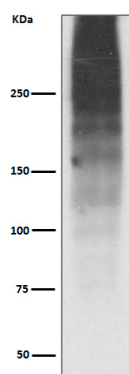
Additional Information

Dilution	WB 1:5000~1:20000 ICC/IF 1:50~1:200 FC 1:100
Purification	Affinity-chromatography
Immunogen	A synthesized peptide derived from human MUC16
Description	The mucins are a family of highly glycosylated, secreted proteins with a basic structure consisting of a variable number of tandem repeats (VNTRs). Thought to provide a protective, lubricating barrier against particles and infectious agents at mucosal surfaces.
Storage Condition and Buffer	Rabbit IgG in phosphate buffered saline , pH 7.4, 150mM NaCl, 0.02% sodium azide and 50% glycerol. Store at +4°C short term. Store at -20°C long term. Avoid freeze / thaw cycle.

Protein Information

Name	MUC16 (HGNC:15582)
Function	Thought to provide a protective, lubricating barrier against particles and infectious agents at mucosal surfaces.
Cellular Location	Cell membrane; Single-pass type I membrane protein. Secreted, extracellular space. Note=May be liberated into the extracellular space following the phosphorylation of the intracellular C-terminus which induces the proteolytic cleavage and liberation of the extracellular domain
Tissue Location	Expressed in corneal and conjunctival epithelia (at protein level). Overexpressed in ovarian carcinomas and ovarian low malignant potential (LMP) tumors as compared to the expression in normal ovarian tissue and ovarian adenomas

Images



Western blot analysis of MUC16 expression in Human ovary cancer lysate.

Please note: All products are 'FOR RESEARCH USE ONLY. NOT FOR USE IN DIAGNOSTIC OR THERAPEUTIC PROCEDURES'.