

Caspase 5 Antibody

Rabbit mAb

Catalog # AP90741

Product Information

Application	WB, IHC, IF, ICC, IP, IHF
Primary Accession	P51878
Reactivity	Human
Clonality	Monoclonal
Other Names	CASP5; Apoptosis related cysteine protease; CASP-5; Caspase-5 subunit p10; Protease ICH-3; TY protease;
Isotype	Rabbit IgG
Host	Rabbit
Calculated MW	49736

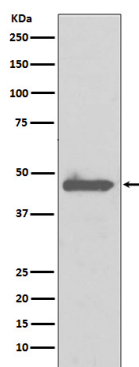
Additional Information

Dilution	WB 1:1000~1:2000 IHC 1:50~1:200 ICC/IF 1:50~1:200 IP 1:50
Purification	Affinity-chromatography
Immunogen	A synthesized peptide derived from human Caspase 5
Description	Caspase-5 (Ich-3/ICRelIII/TY) is a member of the caspase family of cysteine proteases that play a key role in the execution of apoptosis and activation of inflammatory cytokines. It is a mediator of programmed cell death (apoptosis).
Storage Condition and Buffer	Rabbit IgG in phosphate buffered saline , pH 7.4, 150mM NaCl, 0.02% sodium azide and 50% glycerol. Store at +4°C short term. Store at -20°C long term. Avoid freeze / thaw cycle.

Protein Information

Name	CASP5 {ECO:0000303 PubMed:16893518, ECO:0000312 HGNC:HGNC:1506}
Function	Thiol protease that acts as a mediator of programmed cell death (PubMed: 28314590 , PubMed: 29898893). Initiates pyroptosis, a programmed lytic cell death pathway through cleavage of Gasdermin-D (GSDMD): cleavage releases the N-terminal gasdermin moiety (Gasdermin- D, N-terminal) that binds to membranes and forms pores, triggering pyroptosis (PubMed: 29898893). Also mediates cleavage and maturation of IL18 (PubMed: 37993714). Cleavage of GSDMD and IL18 is not strictly dependent on the consensus cleavage site but depends on an exosite interface on CASP4 (PubMed: 37993714). During non-canonical inflammasome activation, cuts CGAS and may play a role in the regulation of antiviral innate immune activation (PubMed: 28314590).
Tissue Location	Expressed in barely detectable amounts in most tissues except brain, highest levels being found in lung, liver and skeletal muscle.

Images



Western blot analysis of Caspase 5 expression in HeLa cell lysate.

Image not found : 202311/AP90741-IHC.jpg

Immunohistochemical analysis of paraffin-embedded human breast cancer, using Caspase 5 Antibody.

Please note: All products are 'FOR RESEARCH USE ONLY. NOT FOR USE IN DIAGNOSTIC OR THERAPEUTIC PROCEDURES'.