

Cytokeratin 6 Antibody

Rabbit mAb

Catalog # AP90742

Product Information

Application	WB, IHC, IF, ICC, IHF
Primary Accession	P02538
Reactivity	Human
Clonality	Monoclonal
Other Names	CK 6A; CK 6B; CK 6C; CK 6D; CK 6E; CK-6C; CK-6E; Cytokeratin 6a; Cytokeratin 6B; Cytokeratin 6C; Cytokeratin 6D; Cytokeratin 6E; Cytokeratin-6C; Cytokeratin-6E; K6a keratin; K6b keratin; K6C; K6c keratin; K6d keratin; K6e keratin; Keratin K6h;
Isotype	Rabbit IgG
Host	Rabbit
Calculated MW	60 KDa

Additional Information

Dilution	WB 1:500~1:2000 IHC 1:50~1:200 ICC/IF 1:50~1:200
Purification	Affinity-chromatography
Immunogen	A synthesized peptide derived from human Cytokeratin 6
Description	Keratins (cytokeratins) are intermediate filament proteins that are mainly expressed in epithelial cells. Involved in the activation of follicular keratinocytes after wounding, while it does not play a major role in keratinocyte proliferation or migration. Participates in the regulation of epithelial migration by inhibiting the activity of SRC during wound repair.
Storage Condition and Buffer	Rabbit IgG in phosphate buffered saline , pH 7.4, 150mM NaCl, 0.02% sodium azide and 50% glycerol. Store at +4°C short term. Store at -20°C long term. Avoid freeze / thaw cycle.

Protein Information

Images

Western blot analysis of Cytokeratin 6 expression in A431 cell lysate.

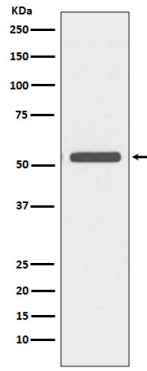


Image not found : 202311/AP90742-IHC.jpg

Immunohistochemical analysis of paraffin-embedded human lung cancer, using Cytokeratin 6 Antibody.

Please note: All products are 'FOR RESEARCH USE ONLY. NOT FOR USE IN DIAGNOSTIC OR THERAPEUTIC PROCEDURES'.